
Summary

Production Name	GRK6 Rabbit Monoclonal Antibody
Description	Recombinant Rabbit Monoclonal antibody
Host	Rabbit
Application	WB
Reactivity	Human,Mouse

Performance

Conjugation	Unconjugated
Modification	Unmodified
Isotype	IgG
Clonality	Monoclonal Antibody
Form	Liquid
Storage	Store at 4°C short term. Aliquot and store at -20°C long term. Avoid freeze/thaw cycles.
Buffer	50mM Tris-Glycine(pH 7.4), 0.15M NaCl, 40% Glycerol, 0.01% Sodium azide and 0.05% BSA
Purification	Affinity Purified

Immunogen

Gene Name	GRK6
Alternative Names	GPRK6
Gene ID	2870
SwissProt ID	P43250

Application

Dilution Ratio	WB: 1/500-1/1000
Molecular Weight	Calculated MW: 66 kDa; Observed MW: 66 kDa

Background

Product Name: GRK6 Rabbit Monoclonal Antibody
Catalog #: AMRe04126

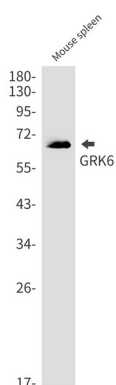


Specifically phosphorylates the activated forms of G protein-coupled receptors.

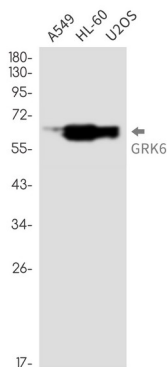
Research Area

Signal Transduction

Image Data



Western blot analysis of GRK6 in mouse spleen lysates using GRK6 antibody.



Western blot analysis of GRK6 in A549, HL-60, U2OS lysates using GRK6 antibody.

Note

For research use only.