
Summary

Production Name	Caspase 9 Rabbit Monoclonal Antibody
Description	Recombinant Rabbit Monoclonal antibody
Host	Rabbit
Application	WB
Reactivity	Human

Performance

Conjugation	Unconjugated
Modification	Unmodified
Isotype	IgG
Clonality	Monoclonal Antibody
Form	Liquid
Storage	Store at 4°C short term. Aliquot and store at -20°C long term. Avoid freeze/thaw cycles.
Buffer	50mM Tris-Glycine(pH 7.4), 0.15M NaCl, 40% Glycerol, 0.01% Sodium azide and 0.05% BSA
Purification	Affinity Purified

Immunogen

Gene Name	CASP9
Alternative Names	CASP9; MCH6; Caspase-9; CASP-9; Apoptotic protease Mch-6; Apoptotic protease-activating factor 3; APAF-3; ICE-like apoptotic protease 6; ICE-LAP6
Gene ID	842
SwissProt ID	P55211

Application

Dilution Ratio	WB: 1/500-1/1000
Molecular Weight	Calculated MW: 46 kDa; Observed MW: 46 kDa

Product Name: Caspase 9 Rabbit Monoclonal Antibody
Catalog #: AMRe04119



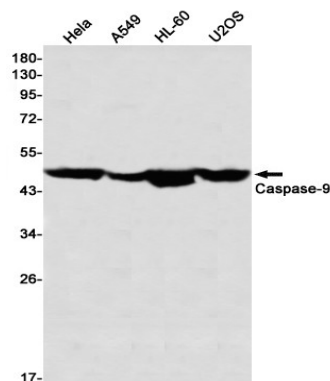
Background

Caspase-9 (ICE-LAP6, Mch6) is an important member of the cysteine aspartic acid protease (caspase) family. Upon apoptotic stimulation, cytochrome c released from mitochondria associates with the 47 kDa procaspase-9/Apaf 1. Apaf-1 mediated activation of caspase-9 involves intrinsic proteolytic processing resulting in cleavage at Asp315 and producing a p35 subunit.

Research Area

Cell Biology

Image Data



Western blot analysis of Caspase9 in HeLa, A549, HL-60, U2OS lysates using Caspase 9 antibody.

Note

For research use only.