

---

## Summary

<b>Production Name</b>	Src Rabbit Monoclonal Antibody
<b>Description</b>	Recombinant Rabbit Monoclonal antibody
<b>Host</b>	Rabbit
<b>Application</b>	WB,IHC-P
<b>Reactivity</b>	Human,Mouse,Rat

## Performance

<b>Conjugation</b>	Unconjugated
<b>Modification</b>	Unmodified
<b>Isotype</b>	IgG
<b>Clonality</b>	Monoclonal Antibody
<b>Form</b>	Liquid
<b>Storage</b>	Store at 4°C short term. Aliquot and store at -20°C long term. Avoid freeze/thaw cycles.
<b>Buffer</b>	50mM Tris-Glycine(pH 7.4), 0.15M NaCl, 40% Glycerol, 0.01% Sodium azide and 0.05% BSA
<b>Purification</b>	Affinity Purified

## Immunogen

<b>Gene Name</b>	SRC
<b>Alternative Names</b>	SRC; SRC1; Proto-oncogene tyrosine-protein kinase Src; Proto-oncogene c-Src; pp60c-src; p60-Src
<b>Gene ID</b>	6714
<b>SwissProt ID</b>	P12931

## Application

<b>Dilution Ratio</b>	WB: 1/500-1/1000 IHC: 1/50-1/100
<b>Molecular Weight</b>	Calculated MW: 60 kDa; Observed MW: 60 kDa

**Product Name: Src Rabbit Monoclonal Antibody**  
**Catalog #: AMRe04108**



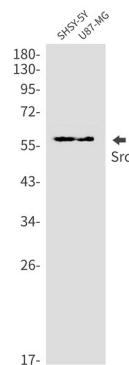
## Background

Src activity is regulated by tyrosine phosphorylation at two sites, but with opposing effects. While phosphorylation at Tyr416 in the activation loop of the kinase domain upregulates enzyme activity, phosphorylation at Tyr527 in the carboxy-terminal tail by Csk renders the enzyme less active (2).

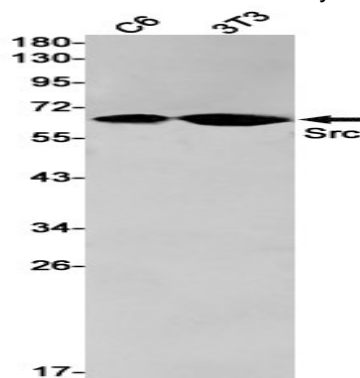
## Research Area

Signal Transduction

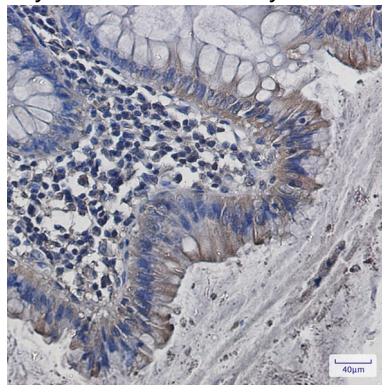
## Image Data



Western blot analysis of Src in SH-SY5Y, U87-MG lysates using Src antibody.



Western blot analysis of Src in C6, 3T3 lysates using Src antibody.



**Product Name: Src Rabbit Monoclonal Antibody**  
**Catalog #: AMRe04108**



---

Immunohistochemistry analysis of paraffin-embedded Human colon cancer using Src antibody. High-pressure and temperature Sodium Citrate pH 6.0 was used for antigen retrieval.

**Note**

For research use only.