
Summary

Production Name	PKC delta Rabbit Monoclonal Antibody
Description	Recombinant Rabbit Monoclonal antibody
Host	Rabbit
Application	WB,IHC-F,IHC-P,ICC/IF
Reactivity	Human,Mouse,Rat

Performance

Conjugation	Unconjugated
Modification	Unmodified
Isotype	IgG
Clonality	Monoclonal Antibody
Form	Liquid
Storage	Store at 4°C short term. Aliquot and store at -20°C long term. Avoid freeze/thaw cycles.
Buffer	50mM Tris-Glycine(pH 7.4), 0.15M NaCl, 40% Glycerol, 0.01% Sodium azide and 0.05% BSA
Purification	Affinity Purified

Immunogen

Gene Name	Prkcd
Alternative Names	Pkcd; PKC[d]; AI385711; PKCdelta; D14Ert420e
Gene ID	18753.0
SwissProt ID	P28867

Application

Dilution Ratio	WB: 1/500-1/1000 IHC: 1/50-1/100 IF: 1/50-1/200
Molecular Weight	Calculated MW: 78 kDa; Observed MW: 78 kDa

Background

Product Name: PKC delta Rabbit Monoclonal Antibody
Catalog #: AMRe04099

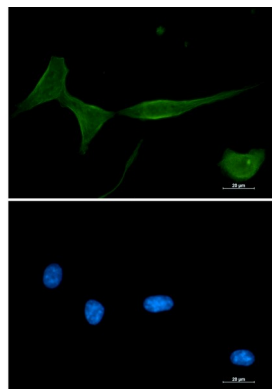


Calcium-independent, phospholipid- and diacylglycerol (DAG)-dependent serine/threonine-protein kinase that plays contrasting roles in cell death and cell survival by functioning as a pro-apoptotic protein during DNA damage-induced apoptosis, but acting as an anti-apoptotic protein during cytokine receptor-initiated cell death, is involved in tumor suppression, is required for oxygen radical production by NADPH oxidase and acts as positive or negative regulator in platelet functional responses.

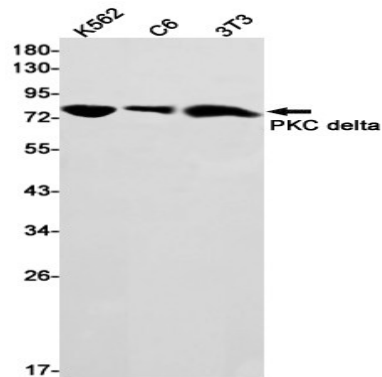
Research Area

Signal Transduction

Image Data

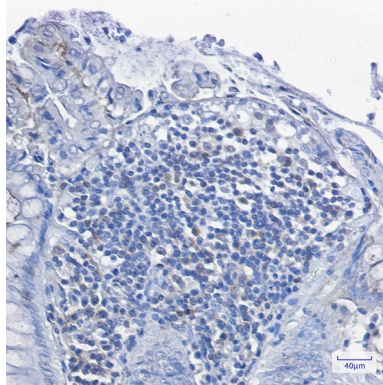


Immunocytochemistry analysis of PKC delta (green) in 3T3 using PKC delta antibody, and DAPI (blue).



Western blot analysis of PKC delta in K562, C6, 3T3 lysates using PKC delta antibody.

Product Name: PKC delta Rabbit Monoclonal Antibody
Catalog #: AMRe04099



Immunohistochemistry analysis of paraffin-embedded Human colon cancer tissue using PKC delta antibody. High-pressure and temperature Sodium Citrate pH 6.0 was used for antigen retrieval.

Note

For research use only.