

**Product Name: Phospho-HSF1 (Ser326) Rabbit
Monoclonal Antibody
Catalog #: AMRe04083**

Summary

Production Name	Phospho-HSF1 (Ser326) Rabbit Monoclonal Antibody
Description	Recombinant Rabbit Monoclonal antibody
Host	Rabbit
Application	WB,IHC-F,IHC-P,ICC/IF,IP
Reactivity	Human

Performance

Conjugation	Unconjugated
Modification	Phosphorylated
Isotype	IgG
Clonality	Monoclonal Antibody
Form	Liquid
Storage	Store at 4°C short term. Aliquot and store at -20°C long term. Avoid freeze/thaw cycles.
Buffer	50mM Tris-Glycine(pH 7.4), 0.15M NaCl, 40% Glycerol, 0.01% Sodium azide and 0.05% BSA
Purification	Affinity Purified

Immunogen

Gene Name	HSF1
Alternative Names	HSF1; HSTF1; Heat shock factor protein 1; HSF 1; Heat shock transcription factor 1; HSTF 1
Gene ID	3297
SwissProt ID	Q00613

Application

Dilution Ratio	WB: 1/500-1/1000 IHC: 1/50-1/100 IF: 1/50-1/200 IP: 1/20
Molecular Weight	Calculated MW: 57 kDa; Observed MW: 82 kDa

**Product Name: Phospho-HSF1 (Ser326) Rabbit
Monoclonal Antibody
Catalog #: AMRe04083**

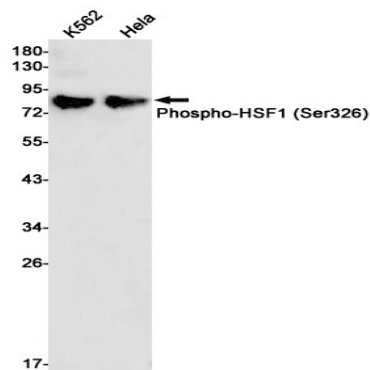
Background

DNA-binding protein that specifically binds heat shock promoter elements (HSE) and activates transcription. In higher eukaryotes, HSF is unable to bind to the HSE unless the cells are heat shocked.

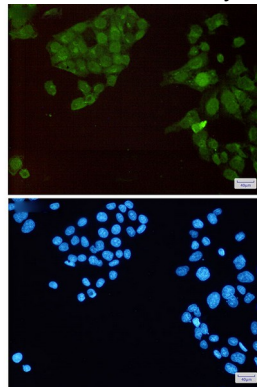
Research Area

Tags & Cell Markers

Image Data

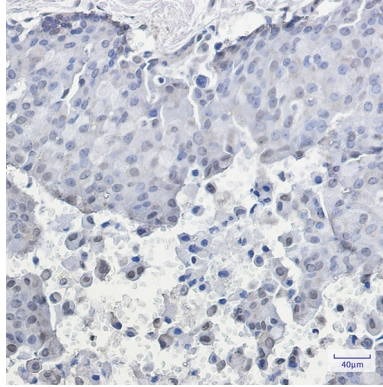


Western blot analysis of Phospho-HSF1 (Ser326) in K562, HeLa lysates using Phospho-HSF1 (Ser326) antibody.



Immunocytochemistry analysis of HSF1 (Phospho-Ser326)(green) in HeLa using HSF1 (Phospho-Ser326) antibody, and DAPI(blue)

**Product Name: Phospho-HSF1 (Ser326) Rabbit
Monoclonal Antibody
Catalog #: AMRe04083**



Immunohistochemistry analysis of paraffin-embedded Human breast cancer using HSF1 (Phospho-Ser326) antibody. High-pressure and temperature Sodium Citrate pH 6.0 was used for antigen retrieval.

Note

For research use only.