

**Product Name: Creatine Kinase B type Rabbit
Monoclonal Antibody
Catalog #: AMRe04066**

Summary

Production Name	Creatine Kinase B type Rabbit Monoclonal Antibody
Description	Recombinant Rabbit Monoclonal antibody
Host	Rabbit
Application	WB,IHC-P
Reactivity	Human,Mouse,Rat

Performance

Conjugation	Unconjugated
Modification	Unmodified
Isotype	IgG
Clonality	Monoclonal Antibody
Form	Liquid
Storage	Store at 4°C short term. Aliquot and store at -20°C long term. Avoid freeze/thaw cycles.
Buffer	50mM Tris-Glycine(pH 7.4), 0.15M NaCl, 40% Glycerol, 0.01% Sodium azide and 0.05% BSA
Purification	Affinity Purified

Immunogen

Gene Name	CKB
Alternative Names	BCK; Ckb; CKBB; HEL 211; HEL S 29
Gene ID	1152
SwissProt ID	P12277

Application

Dilution Ratio	WB: 1/500-1/1000 IHC: 1/50-1/100
Molecular Weight	Calculated MW: 43 kDa; Observed MW: 43 kDa

**Product Name: Creatine Kinase B type Rabbit
Monoclonal Antibody
Catalog #: AMRe04066**

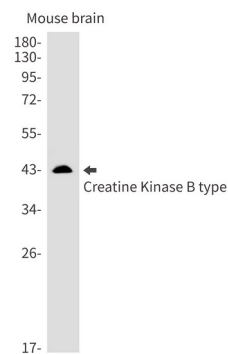
Background

Reversibly catalyzes the transfer of phosphate between ATP and various phosphogens (e.g. creatine phosphate). Creatine kinase isoenzymes play a central role in energy transduction in tissues with large, fluctuating energy demands, such as skeletal muscle, heart, brain and spermatozoa.

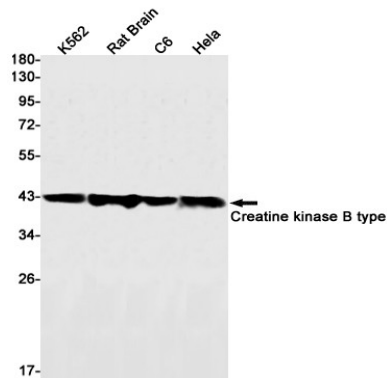
Research Area

Neuroscience

Image Data

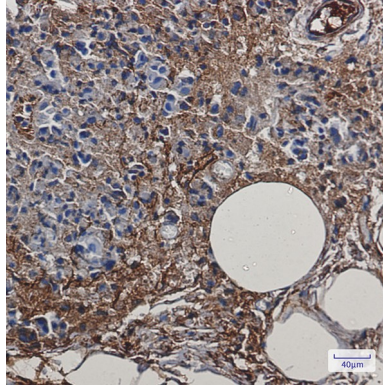


Western blot analysis of Creatine Kinase B type in mouse brain lysates using Creatine Kinase B type antibody.



Western blot analysis of Creatine kinase B type in K562, rat Brain, C6, HeLa lysates using Creatine kinase B type antibody.

**Product Name: Creatine Kinase B type Rabbit
Monoclonal Antibody
Catalog #: AMRe04066**



Immunohistochemistry analysis of paraffin-embedded Human breast cancer using Creatine kinase B type antibody. High-pressure and temperature Sodium Citrate pH 6.0 was used for antigen retrieval.

Note

For research use only.