

**Product Name: Phospho-CDC6 (Ser106) Rabbit
Monoclonal Antibody
Catalog #: AMRe04063**

Summary

Production Name	Phospho-CDC6 (Ser106) Rabbit Monoclonal Antibody
Description	Recombinant Rabbit Monoclonal antibody
Host	Rabbit
Application	WB
Reactivity	Human,Rat

Performance

Conjugation	Unconjugated
Modification	Phosphorylated
Isotype	IgG
Clonality	Monoclonal Antibody
Form	Liquid
Storage	Store at 4°C short term. Aliquot and store at -20°C long term. Avoid freeze/thaw cycles.
Buffer	50mM Tris-Glycine(pH 7.4), 0.15M NaCl, 40% Glycerol, 0.01% Sodium azide and 0.05% BSA
Purification	Affinity Purified

Immunogen

Gene Name	CDC6
Alternative Names	CDC6; CDC18L; Cell division control protein 6 homolog; CDC6-related protein; Cdc18-related protein; HsCdc18; p62(cdc6); HsCDC6
Gene ID	990
SwissProt ID	Q99741

Application

Dilution Ratio	WB: 1/500-1/1000
Molecular Weight	Calculated MW: 63 kDa; Observed MW: 63 kDa

**Product Name: Phospho-CDC6 (Ser106) Rabbit
Monoclonal Antibody
Catalog #: AMRe04063**

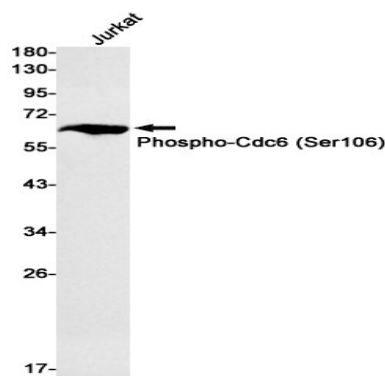
Background

Involved in the initiation of DNA replication. Also participates in checkpoint controls that ensure DNA replication is completed before mitosis is initiated. Cdc6 has recently been shown to play an important role in the intra-S-phase p21 Waf1/Cip1-dependent DNA damage response. Both cdc6 and CDT1 are degraded by the ubiquitin proteasome pathway in response to DNA damage associated with re-replication.

Research Area

Epigenetics and Nuclear Signaling

Image Data



Western blot analysis of Phospho-Cdc6 (Ser106) in Jurkat lysates using Phospho-CDC6 (Ser106) antibody.

Note

For research use only.