

---

## Summary

<b>Production Name</b>	CDC42 Rabbit Monoclonal Antibody
<b>Description</b>	Recombinant Rabbit Monoclonal antibody
<b>Host</b>	Rabbit
<b>Application</b>	WB
<b>Reactivity</b>	Human,Rat

## Performance

<b>Conjugation</b>	Unconjugated
<b>Modification</b>	Unmodified
<b>Isotype</b>	IgG
<b>Clonality</b>	Monoclonal Antibody
<b>Form</b>	Liquid
<b>Storage</b>	Store at 4°C short term. Aliquot and store at -20°C long term. Avoid freeze/thaw cycles.
<b>Buffer</b>	50mM Tris-Glycine(pH 7.4), 0.15M NaCl, 40% Glycerol, 0.01% Sodium azide and 0.05% BSA
<b>Purification</b>	Affinity Purified

## Immunogen

<b>Gene Name</b>	CDC42
<b>Alternative Names</b>	CDC42; CDC42Hs; G25K; TKS
<b>Gene ID</b>	998
<b>SwissProt ID</b>	P60953

## Application

<b>Dilution Ratio</b>	WB: 1/500-1/1000
<b>Molecular Weight</b>	Calculated MW: 21 kDa; Observed MW: 21 kDa

## Background

---

**Product Name: CDC42 Rabbit Monoclonal Antibody**  
**Catalog #: AMRe04062**

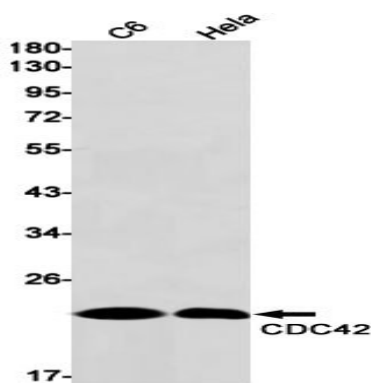


Rac and Cdc42 are members of the Rho-GTPase family. In mammals, Rac exists as three isoforms, Rac1, Rac2 and Rac3, which are highly similar in sequence. Rac1 and Cdc42, the most widely studied of this group, are ubiquitously expressed. Rac and Cdc42 play key signaling roles in cytoskeletal reorganization, membrane trafficking, transcriptional regulation, cell growth and development.

## Research Area

Cell Biology

## Image Data



Western blot analysis of CDC42 in C6, HeLa lysates using CDC42 antibody.

## Note

For research use only.