

Summary

Production Name	Catalase Rabbit Monoclonal Antibody
Description	Recombinant Rabbit Monoclonal antibody
Host	Rabbit
Application	WB,IHC-F,IHC-P,ICC/IF
Reactivity	Human

Performance

Conjugation	Unconjugated
Modification	Unmodified
Isotype	IgG
Clonality	Monoclonal Antibody
Form	Liquid
Storage	Store at 4°C short term. Aliquot and store at -20°C long term. Avoid freeze/thaw cycles.
Buffer	50mM Tris-Glycine(pH 7.4), 0.15M NaCl, 40% Glycerol, 0.01% Sodium azide and 0.05% BSA
Purification	Affinity Purified

Immunogen

Gene Name	CAT
Alternative Names	Cas1; CAT; Catalase; Cs1
Gene ID	847
SwissProt ID	P04040

Application

Dilution Ratio	WB: 1/500-1/1000 IHC: 1/50-1/100 IF: 1/50-1/200
Molecular Weight	Calculated MW: 60 kDa; Observed MW: 60 kDa

Background

Product Name: Catalase Rabbit Monoclonal Antibody
Catalog #: AMRe04061

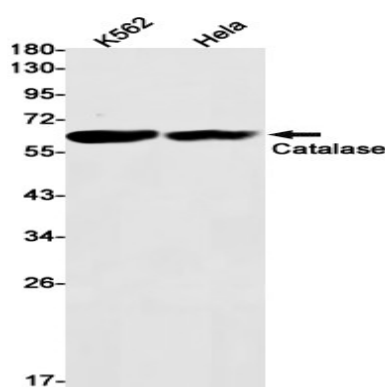


Catalase catalyzes the conversion of hydrogen peroxide to water and oxygen. Research studies show that overexpression of this antioxidant enzyme increases the ability of pancreatic β -cells to scavenge reactive oxygen species (ROS), thereby protecting pancreatic β -cells from oxidative stress.

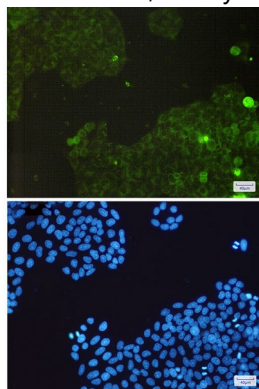
Research Area

Tags & Cell Markers

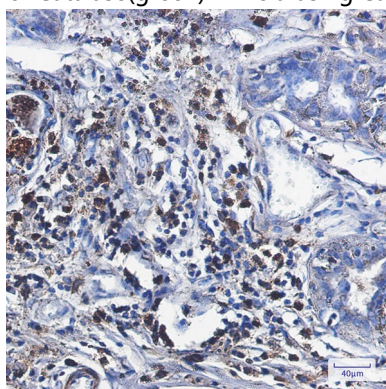
Image Data



Western blot analysis of Catalase in K562, HeLa lysates using Catalase antibody.



Immunocytochemistry analysis of Catalase(green) in HeLa using Catalase antibody, and DAPI(blue)



Immunohistochemistry analysis of paraffin-embedded Human breast cancer using Catalase antibody. High-pressure and

Product Name: Catalase Rabbit Monoclonal Antibody
Catalog #: AMRe04061



temperature Sodium Citrate pH 6.0 was used for antigen retrieval.

Note

For research use only.