
Summary

Production Name	Caldesmon Rabbit Monoclonal Antibody
Description	Recombinant Rabbit Monoclonal antibody
Host	Rabbit
Application	WB,IHC-P,IP
Reactivity	Human,Mouse,Rat

Performance

Conjugation	Unconjugated
Modification	Unmodified
Isotype	IgG
Clonality	Monoclonal Antibody
Form	Liquid
Storage	Store at 4°C short term. Aliquot and store at -20°C long term. Avoid freeze/thaw cycles.
Buffer	50mM Tris-Glycine(pH 7.4), 0.15M NaCl, 40% Glycerol, 0.01% Sodium azide and 0.05% BSA
Purification	Affinity Purified

Immunogen

Gene Name	CALD1
Alternative Names	CDM; HCAD; LCAD; H-CAD; L-CAD; NAG22
Gene ID	800
SwissProt ID	Q05682

Application

Dilution Ratio	WB: 1/500-1/1000 IHC: 1/50-1/100 IP: 1/20
Molecular Weight	Calculated MW: 93 kDa; Observed MW: 70-80 kDa

Background

Product Name: Caldesmon Rabbit Monoclonal Antibody
Catalog #: AMRe04057

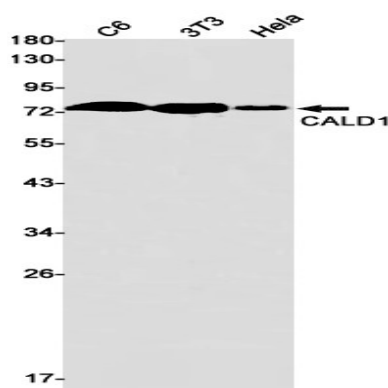


Actin- and myosin-binding protein implicated in the regulation of actomyosin interactions in smooth muscle and nonmuscle cells (could act as a bridge between myosin and actin filaments). Stimulates actin binding of tropomyosin which increases the stabilization of actin filament structure. In muscle tissues, inhibits the actomyosin ATPase by binding to F-actin.

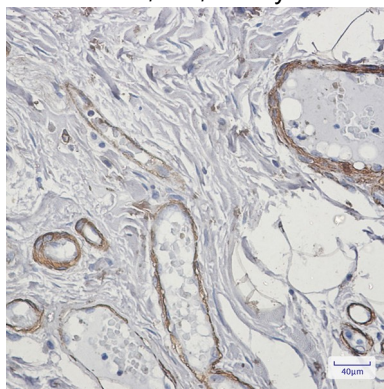
Research Area

Cell Biology

Image Data



Western blot analysis of CALD1 in C6, 3T3, HeLa lysates using Caldesmon antibody.



Immunohistochemistry analysis of paraffin-embedded Human colon cancer using Caldesmon antibody. High-pressure and temperature Sodium Citrate pH 6.0 was used for antigen retrieval.

Note

For research use only.