
Summary

Production Name	ATE1 Rabbit Monoclonal Antibody
Description	Recombinant Rabbit Monoclonal antibody
Host	Rabbit
Application	WB,IHC-P
Reactivity	Human,Rat

Performance

Conjugation	Unconjugated
Modification	Unmodified
Isotype	IgG
Clonality	Monoclonal Antibody
Form	Liquid
Storage	Store at 4°C short term. Aliquot and store at -20°C long term. Avoid freeze/thaw cycles.
Buffer	50mM Tris-Glycine(pH 7.4), 0.15M NaCl, 40% Glycerol, 0.01% Sodium azide and 0.05% BSA
Purification	Affinity Purified

Immunogen

Gene Name	ATE1
Alternative Names	Arginyltransferase 1; R-transferase 1
Gene ID	11101
SwissProt ID	O95260

Application

Dilution Ratio	WB: 1/500-1/1000 IHC: 1/50-1/100
Molecular Weight	Calculated MW: 59 kDa; Observed MW: 59 kDa

Background

Product Name: ATE1 Rabbit Monoclonal Antibody
Catalog #: AMRe04055

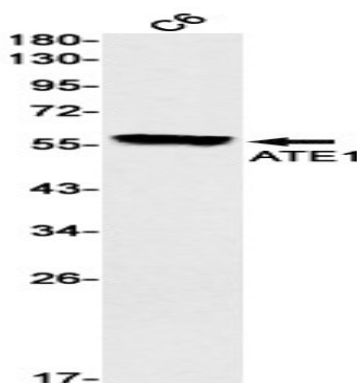


Involved in the post-translational conjugation of arginine to the N-terminal aspartate or glutamate of a protein. This arginylation is required for degradation of the protein via the ubiquitin pathway. Does not arginylate cysteine residues .

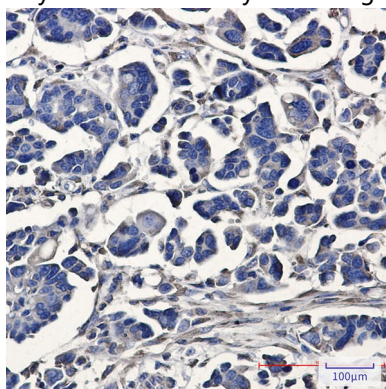
Research Area

Neuroscience

Image Data



Western blot analysis of ATE1 in C6 lysates using ATE1 antibody.



Immunohistochemistry analysis of paraffin-embedded Human Cholangiocarcinoma using ATE1 antibody. High-pressure and temperature Sodium Citrate pH 6.0 was used for antigen retrieval.

Note

For research use only.