

**Product Name: Phospho-4E BP1 (Thr46) Rabbit
Monoclonal Antibody
Catalog #: AMRe04050**

Summary

Production Name	Phospho-4E BP1 (Thr46) Rabbit Monoclonal Antibody
Description	Recombinant Rabbit Monoclonal antibody
Host	Rabbit
Application	WB,IHC-P,IP
Reactivity	Human,Mouse,Rat

Performance

Conjugation	Unconjugated
Modification	Phosphorylated
Isotype	IgG
Clonality	Monoclonal Antibody
Form	Liquid
Storage	Store at 4°C short term. Aliquot and store at -20°C long term. Avoid freeze/thaw cycles.
Buffer	50mM Tris-Glycine(pH 7.4), 0.15M NaCl, 40% Glycerol, 0.01% Sodium azide and 0.05% BSA
Purification	Affinity Purified

Immunogen

Gene Name	EIF4EBP1 EIF4EBP1; Eukaryotic translation initiation factor 4E-binding protein 1; 4E-BP1; eIF4E-binding protein 1; Phosphorylated heat- and acid-stable protein regulated by insulin 1;
Alternative Names	PHAS-I
Gene ID	1978
SwissProt ID	Q13541

Application

Dilution Ratio	WB: 1/500-1/1000 IHC: 1/50-1/100 IP: 1/20
Molecular Weight	Calculated MW: 13 kDa; Observed MW: 15-20 kDa

Product Name: Phospho-4E BP1 (Thr46) Rabbit Monoclonal Antibody
Catalog #: AMRe04050

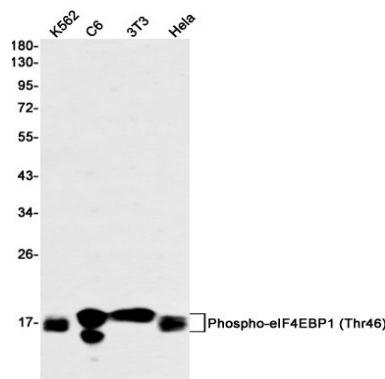
Background

Translation repressor protein 4E-BP1 (also known as PHAS-1) inhibits cap-dependent translation by binding to the translation initiation factor eIF4E. Hyperphosphorylation of 4E-BP1 disrupts this interaction and results in activation of cap-dependent translation. Both the PI3 kinase/Akt pathway and FRAP/mTOR kinase regulate 4E-BP1 activity.

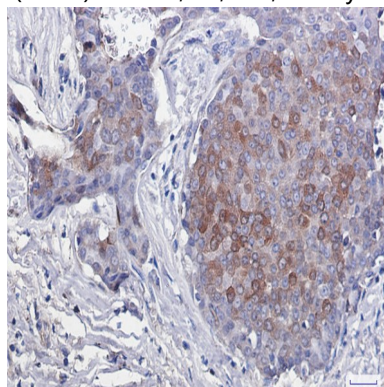
Research Area

Epigenetics and Nuclear Signaling

Image Data



Western blot analysis of Phospho-eIF4EBP1 (Thr46) in K562, C6, 3T3, HeLa lysates using Phospho-4E BP1 (Thr46) antibody.



Immunohistochemistry analysis of paraffin-embedded Human breast cancer using eIF4EBP1/eIF4EBP2/eIF4EBP3 (Phospho-T45) antibody. High-pressure and temperature Sodium Citrate pH 6.0 was used for antigen retrieval.

Note

For research use only.