

**Product Name: Phospho-Presenilin 1 (Ser310) Rabbit
Monoclonal Antibody
Catalog #: AMRe04049**



Summary

Production Name	Phospho-Presenilin 1 (Ser310) Rabbit Monoclonal Antibody
Description	Recombinant Rabbit Monoclonal antibody
Host	Rabbit
Application	WB
Reactivity	Human

Performance

Conjugation	Unconjugated
Modification	Phosphorylated
Isotype	IgG
Clonality	Monoclonal Antibody
Form	Liquid
Storage	Store at 4°C short term. Aliquot and store at -20°C long term. Avoid freeze/thaw cycles.
Buffer	50mM Tris-Glycine(pH 7.4), 0.15M NaCl, 40% Glycerol, 0.01% Sodium azide and 0.05% BSA
Purification	Affinity Purified

Immunogen

Gene Name	PSEN1
Alternative Names	PSEN1; AD3; PS1; PSNL1; Presenilin-1; PS-1; Protein S182
Gene ID	5663
SwissProt ID	P49768

Application

Dilution Ratio	WB: 1/500-1/1000
Molecular Weight	Calculated MW: 53 kDa; Observed MW: 22 kDa

**Product Name: Phospho-Presenilin 1 (Ser310) Rabbit
Monoclonal Antibody
Catalog #: AMRe04049**



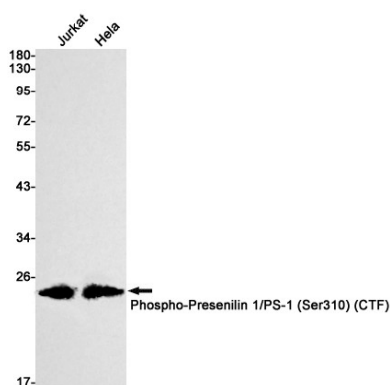
Background

Probable catalytic subunit of the gamma-secretase complex, an endoprotease complex that catalyzes the intramembrane cleavage of integral membrane proteins such as Notch receptors and APP (beta-amyloid precursor protein). Requires the other members of the gamma-secretase complex to have a protease activity.

Research Area

Neuroscience

Image Data



Western blot analysis of Phospho-Presenilin 1/PS1 (Ser310) in Jurkat, HeLa lysates using Phospho-Presenilin 1 (Ser310) antibody.

Note

For research use only.