

## Summary

<b>Production Name</b>	TAF15 Rabbit Monoclonal Antibody
<b>Description</b>	Recombinant Rabbit Monoclonal antibody
<b>Host</b>	Rabbit
<b>Application</b>	WB,IHC-F,IHC-P,ICC/IF
<b>Reactivity</b>	Human,Mouse,Rat

## Performance

<b>Conjugation</b>	Unconjugated
<b>Modification</b>	Unmodified
<b>Isotype</b>	IgG
<b>Clonality</b>	Monoclonal Antibody
<b>Form</b>	Liquid
<b>Storage</b>	Store at 4°C short term. Aliquot and store at -20°C long term. Avoid freeze/thaw cycles.
<b>Buffer</b>	50mM Tris-Glycine(pH 7.4), 0.15M NaCl, 40% Glycerol, 0.01% Sodium azide and 0.05% BSA
<b>Purification</b>	Affinity Purified

## Immunogen

<b>Gene Name</b>	TAF15
<b>Alternative Names</b>	TAF15; RBP56; TAF2N; TATA-binding protein-associated factor 2N; 68 kDa TATA-binding protein-associated factor; TAF(II)68; TAFII68; RNA-binding protein 56
<b>Gene ID</b>	8148
<b>SwissProt ID</b>	Q92804

## Application

<b>Dilution Ratio</b>	WB: 1/500-1/1000 IHC: 1/50-1/100 IF: 1/50-1/200
<b>Molecular Weight</b>	Calculated MW: 62 kDa; Observed MW: 77 kDa

**Product Name: TAF15 Rabbit Monoclonal Antibody**  
**Catalog #: AMRe04036**



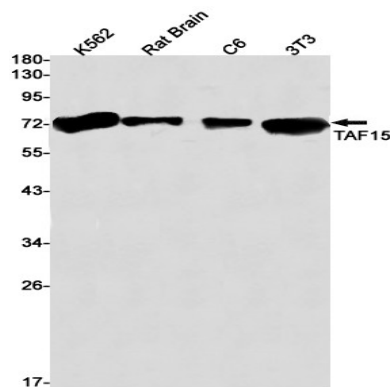
## Background

RNA and ssDNA-binding protein that may play specific roles during transcription initiation at distinct promoters. Can enter the preinitiation complex together with the RNA polymerase II (Pol II).

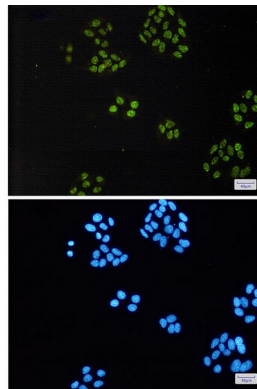
## Research Area

Epigenetics and Nuclear Signaling

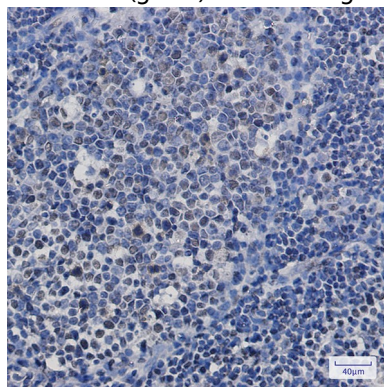
## Image Data



Western blot analysis of TAF15 in K562, rat Brain, C6, 3T3 lysates using TAF15 antibody.



Immunocytochemistry analysis of TAF15 (green) in HeLa using TAF15 antibody, and DAPI (blue)



Immunohistochemistry analysis of paraffin-embedded Human tonsil using TAF15 antibody. High-pressure and temperature

**Product Name: TAF15 Rabbit Monoclonal Antibody**  
**Catalog #: AMRe04036**



---

Sodium Citrate pH 6.0 was used for antigen retrieval.

**Note**

For research use only.