
Summary

Production Name	Caspase-2 Rabbit Monoclonal Antibody
Description	Recombinant Rabbit Monoclonal antibody
Host	Rabbit
Application	WB,IHC-F,IHC-P,ICC/IF,FC
Reactivity	Human, Mouse, Rat

Performance

Conjugation	Unconjugated
Modification	Unmodified
Isotype	IgG
Clonality	Monoclonal Antibody
Form	Liquid
Storage	Store at 4°C short term. Aliquot and store at -20°C long term. Avoid freeze/thaw cycles.
Buffer	Liquid in 50mM Tris-Glycine(pH 7.4), 0.15M NaCl, 40%Glycerol, 0.01% sodium azide and 0.05% BSA.
Purification	Affinity Purified

Immunogen

Gene Name	CASP2 Caspase-2; Caspase 2; Caspase2; CASP-2; Neural precursor cell expressed developmentally down-regulated protein 2; NEDD-2; Protease ICH-1; CASP2; ICH1;
Alternative Names	NEDD2
Gene ID	42
SwissProt ID	P42575, P29594, P55215

Application

Dilution Ratio	WB: 1/500-1/1000 IHC: 1/50-1/100 IF: 1/50-1/200 FC: 1/50-1/100
Molecular Weight	Calculated MW:51 kDa;Observed MW: 48 kDa

Product Name: Caspase-2 Rabbit Monoclonal Antibody
Catalog #: AMRe04030



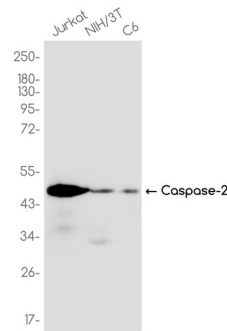
Background

Caspase-2 (Nedd2, ICH-1) is an aspartate-specific cysteine protease that is activated in response to various apoptotic stimuli. Caspase-2 is unique among the caspases in that it has features of both upstream caspases (long prodomain) and downstream caspases (DEXD substrate specificity). Caspase-2 is highly expressed in the brain during development and is expressed at low levels in adult tissue.

Research Area

Cell Biology

Image Data



Western blot analysis of Caspase-2 in Jurkat,3T3,C6 lysates using Caspase-2 antibody.

Note

For research use only.