

Product Name: Cytokeratin 6 Rabbit Monoclonal Antibody
Catalog #: AMRe04020

Summary

Production Name	Cytokeratin 6 Rabbit Monoclonal Antibody
Description	Recombinant Rabbit Monoclonal antibody
Host	Rabbit
Application	WB,IHC-F,IHC-P,ICC/IF
Reactivity	Human

Performance

Conjugation	Unconjugated
Modification	Unmodified
Isotype	IgG
Clonality	Monoclonal Antibody
Form	Liquid
Storage	Store at 4°C short term. Aliquot and store at -20°C long term. Avoid freeze/thaw cycles.
Buffer	Liquid in 50mM Tris-Glycine(pH 7.4), 0.15M NaCl, 40%Glycerol, 0.01% sodium azide and 0.05% BSA.
Purification	Affinity Purified

Immunogen

Gene Name	KRT6A/KRT6B/KRT6C
Alternative Names	CK 6A; CK 6B; CK 6C; CK 6D; CK 6E; CK-6C; CK-6E; K6a keratin; K6b keratin; K6C; K6c keratin; K6d keratin; K6e keratin; Keratin; KRT6A; KRT6B; KRT6C; KRT6D; KRT6E
Gene ID	3853
SwissProt ID	P02538

Application

Dilution Ratio	WB: 1/500-1/1000 IHC: 1/50-1/100 IF: 1/50-1/200
Molecular Weight	Calculated MW:60 kDa;Observed MW: 60 kDa

Product Name: Cytokeratin 6 Rabbit Monoclonal Antibody
Catalog #: AMRe04020

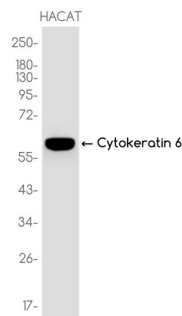
Background

There are at least six isoforms of human type II keratin-6 (K6). There are two types of cytoskeletal and microfibrillar keratin, I (acidic) and II (neutral to basic) (40-55 and 56-70 kDa, respectively).

Research Area

Signal Transduction

Image Data



Western blot analysis of Cytokeratin 6 in HACAT lysates using Cytokeratin 6 antibody.

Note

For research use only.