

Summary

Production Name	CD22 Rabbit Monoclonal Antibody
Description	Recombinant Rabbit Monoclonal antibody
Host	Rabbit
Application	WB
Reactivity	Human, Rat

Performance

Conjugation	Unconjugated
Modification	Unmodified
Isotype	IgG
Clonality	Monoclonal Antibody
Form	Liquid
Storage	Store at 4°C short term. Aliquot and store at -20°C long term. Avoid freeze/thaw cycles.
Buffer	Liquid in 50mM Tris-Glycine(pH 7.4), 0.15M NaCl, 40%Glycerol, 0.01% sodium azide and 0.05% BSA.
Purification	Affinity Purified

Immunogen

Gene Name	CD22 CD22; SIGLEC2; B-cell receptor CD22; B-lymphocyte cell adhesion molecule; BL-CAM;
Alternative Names	Sialic acid-binding Ig-like lectin 2; Siglec-2; T-cell surface antigen Leu-14; CD antigen CD22
Gene ID	933
SwissProt ID	P20273

Application

Dilution Ratio	WB: 1/500-1/1000
Molecular Weight	Calculated MW:95 kDa;Observed MW: 140 kDa

Product Name: CD22 Rabbit Monoclonal Antibody
Catalog #: AMRe04014



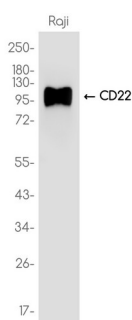
Background

Acts as a regulator of B cell signaling. CD22 is expressed as both a cytoplasmic and membrane protein during discrete stages of B cell lymphocyte differentiation. The cytoplasmic form of CD22, expressed early in B cell development, is a useful marker for acute lymphocytic leukemia. The membrane form of CD22 is expressed in mature B cells prior to their differentiation into plasma cells. Alternative splicing results in two different isoforms, CD22 α and CD22 β .

Research Area

Immunology

Image Data



Western blot analysis of CD22 in Raji lysates using CD22 antibody.

Note

For research use only.