

Product Name: CD239/BCAM Rabbit Monoclonal Antibody
Catalog #: AMRe04011

Summary

Production Name	CD239/BCAM Rabbit Monoclonal Antibody
Description	Recombinant Rabbit Monoclonal antibody
Host	Rabbit
Application	WB,IHC-F,IHC-P,ICC/IF
Reactivity	Human, Mouse, Rat

Performance

Conjugation	Unconjugated
Modification	Unmodified
Isotype	IgG
Clonality	Monoclonal Antibody
Form	Liquid
Storage	Store at 4°C short term. Aliquot and store at -20°C long term. Avoid freeze/thaw cycles.
Buffer	Liquid in 50mM Tris-Glycine(pH 7.4), 0.15M NaCl, 40%Glycerol, 0.01% sodium azide and 0.05% BSA.
Purification	Affinity Purified

Immunogen

Gene Name	BCAM
Alternative Names	BCAM; LU; MSK19; Basal cell adhesion molecule; Auberger B antigen; B-CAM cell surface glycoprotein; F8/G253 antigen; Lutheran antigen; Lutheran blood group glycoprotein; CD239
Gene ID	4059
SwissProt ID	P50895

Application

Dilution Ratio	WB: 1/500-1/1000 IHC: 1/50-1/100 IF: 1/50-1/200
Molecular Weight	Calculated MW:67 kDa;Observed MW: 85kDa

Product Name: CD239/BCAM Rabbit Monoclonal Antibody
Catalog #: AMRe04011

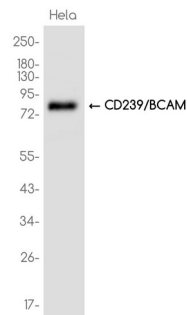
Background

Laminin alpha-5 receptor. May mediate intracellular signaling.

Research Area

Cardiovascular

Image Data



Western blot analysis of CD239/BCAM in HeLa lysates using CD239/BCAM antibody.

Note

For research use only.