

Product Name: S100 alpha 6/PRA Rabbit Monoclonal Antibody
Catalog #: AMRe04004



Summary

| | |
|------------------------|---|
| Production Name | S100 alpha 6/PRA Rabbit Monoclonal Antibody |
| Description | Recombinant Rabbit Monoclonal antibody |
| Host | Rabbit |
| Application | WB,IHC-F,IHC-P,ICC/IF |
| Reactivity | Human |

Performance

| | |
|---------------------|---|
| Conjugation | Unconjugated |
| Modification | Unmodified |
| Isotype | IgG |
| Clonality | Monoclonal Antibody |
| Form | Liquid |
| Storage | Store at 4°C short term. Aliquot and store at -20°C long term. Avoid freeze/thaw cycles. |
| Buffer | Liquid in 50mM Tris-Glycine(pH 7.4), 0.15M NaCl, 40%Glycerol, 0.01% sodium azide and 0.05% BSA. |
| Purification | Affinity Purified |

Immunogen

| | |
|--------------------------|---|
| Gene Name | S100A6 |
| Alternative Names | S100 alpha6; Protein S100-A6; Calcyclin; MLN 4; PRA; CACY; CABP; 5B10 |
| Gene ID | 6277 |
| SwissProt ID | P06703 |

Application

| | |
|-------------------------|---|
| Dilution Ratio | WB: 1/500-1/1000 IHC: 1/50-1/100 IF: 1/50-1/200 |
| Molecular Weight | Calculated MW:10 kDa;Observed MW: 10 kDa |

Product Name: S100 alpha 6/PRA Rabbit Monoclonal Antibody
Catalog #: AMRe04004



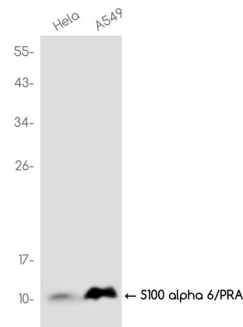
Background

S100A6 (calcyclin) is involved in a number of cellular processes, including exocytosis and cell cycle regulation. In addition, S100A6 interacts with a number of proteins such as SIP, GAPDH, and annexins in a calcium-dependent fashion. Research studies demonstrate that a down regulation of corresponding S100A6 gene expression causes a decrease in cell proliferation.

Research Area

Cell Biology

Image Data



Western blot analysis of S100 alpha 6/PRA in HeLa, A549 lysates using S100 alpha 6/PRA antibody.

Note

For research use only.