

---

## Summary

<b>Production Name</b>	Lyn Rabbit Monoclonal Antibody
<b>Description</b>	Recombinant Rabbit Monoclonal antibody
<b>Host</b>	Rabbit
<b>Application</b>	WB
<b>Reactivity</b>	Human, Mouse, Rat

## Performance

<b>Conjugation</b>	Unconjugated
<b>Modification</b>	Unmodified
<b>Isotype</b>	IgG
<b>Clonality</b>	Monoclonal Antibody
<b>Form</b>	Liquid
<b>Storage</b>	Store at 4°C short term. Aliquot and store at -20°C long term. Avoid freeze/thaw cycles.
<b>Buffer</b>	Liquid in 50mM Tris-Glycine(pH 7.4), 0.15M NaCl, 40%Glycerol, 0.01% sodium azide and 0.05% BSA.
<b>Purification</b>	Affinity Purified

## Immunogen

<b>Gene Name</b>	LYN
<b>Alternative Names</b>	LYN; JTK8; Tyrosine-protein kinase Lyn; Lck/Yes-related novel protein tyrosine kinase; V-yes-1 Yamaguchi sarcoma viral related oncogene homolog; p53Lyn; p56Lyn
<b>Gene ID</b>	4067
<b>SwissProt ID</b>	P07948

## Application

<b>Dilution Ratio</b>	WB: 1/500-1/1000
<b>Molecular Weight</b>	Calculated MW:59 kDa;Observed MW: 59 kDa

**Product Name: Lyn Rabbit Monoclonal Antibody**  
**Catalog #: AMRe03992**



---

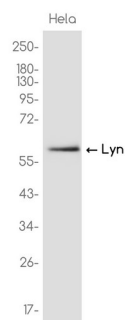
## Background

Lyn a tyrosine kinase of the Src family that plays a role in B cell antigen-receptor signaling.

## Research Area

Signal Transduction

## Image Data



Western blot analysis of Lyn in HeLa lysates using Lyn antibody.

## Note

For research use only.