

**Product Name: 14-3-3 epsilon Rabbit Monoclonal Antibody**  
**Catalog #: AMRe03986**

---

## Summary

<b>Production Name</b>	14-3-3 epsilon Rabbit Monoclonal Antibody
<b>Description</b>	Recombinant Rabbit Monoclonal antibody
<b>Host</b>	Rabbit
<b>Application</b>	WB,ICC/IF,FC
<b>Reactivity</b>	Human, Mouse, Rat

## Performance

<b>Conjugation</b>	Unconjugated
<b>Modification</b>	Unmodified
<b>Isotype</b>	IgG
<b>Clonality</b>	Monoclonal Antibody
<b>Form</b>	Liquid
<b>Storage</b>	Store at 4°C short term. Aliquot and store at -20°C long term. Avoid freeze/thaw cycles.
<b>Buffer</b>	Liquid in 50mM Tris-Glycine(pH 7.4), 0.15M NaCl, 40%Glycerol, 0.01% sodium azide and 0.05% BSA.
<b>Purification</b>	Affinity Purified

## Immunogen

<b>Gene Name</b>	YWHAE
<b>Alternative Names</b>	14-3-3 epsilon; 14-3-3E; 143E; KCIP-1; MDCR; Protein kinase C inhibitor protein-1; YWHAE
<b>Gene ID</b>	7531
<b>SwissProt ID</b>	P62258

## Application

<b>Dilution Ratio</b>	WB: 1/500-1/1000 IF: 1/50-1/200 FC: 1/50-1/100
<b>Molecular Weight</b>	Calculated MW:29 kDa;Observed MW: 29 kDa

**Product Name: 14-3-3 epsilon Rabbit Monoclonal Antibody**  
**Catalog #: AMRe03986**

---

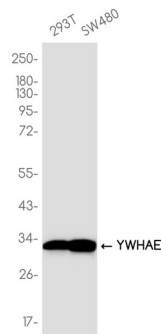
## Background

Adapter protein implicated in the regulation of a large spectrum of both general and specialized signaling pathway. Binds to a large number of partners, usually by recognition of a phosphoserine or phosphothreonine motif. Binding generally results in the modulation of the activity of the binding partner.

## Research Area

Neuroscience

## Image Data



Western blot analysis of 14-3-3 epsilon in 293T, SW480 lysates using 14-3-3 epsilon antibody.

## Note

For research use only.