

**Product Name: SAMHD1 Rabbit Monoclonal Antibody**  
**Catalog #: AMRe03982**



## Summary

<b>Production Name</b>	SAMHD1 Rabbit Monoclonal Antibody
<b>Description</b>	Recombinant Rabbit Monoclonal antibody
<b>Host</b>	Rabbit
<b>Application</b>	WB,IHC-F,IHC-P,ICC/IF,FC
<b>Reactivity</b>	Human

## Performance

<b>Conjugation</b>	Unconjugated
<b>Modification</b>	Unmodified
<b>Isotype</b>	IgG
<b>Clonality</b>	Monoclonal Antibody
<b>Form</b>	Liquid
<b>Storage</b>	Store at 4°C short term. Aliquot and store at -20°C long term. Avoid freeze/thaw cycles.
<b>Buffer</b>	Liquid in 50mM Tris-Glycine(pH 7.4), 0.15M NaCl, 40%Glycerol, 0.01% sodium azide and 0.05% BSA.
<b>Purification</b>	Affinity Purified

## Immunogen

<b>Gene Name</b>	SAMHD1
<b>Alternative Names</b>	SAMHD1; AGS5; CHBL2; DCIP; HDDC1; MOP-5; MOP5; SBBI88; Mg11
<b>Gene ID</b>	25939
<b>SwissProt ID</b>	Q9Y3Z3

## Application

<b>Dilution Ratio</b>	WB: 1/500-1/1000 IHC: 1/50-1/100 IF: 1/50-1/200 FC: 1/50-1/100
<b>Molecular Weight</b>	Calculated MW:72 kDa;Observed MW: 72 kDa

## Background

**Product Name: SAMHD1 Rabbit Monoclonal Antibody**  
**Catalog #: AMRe03982**

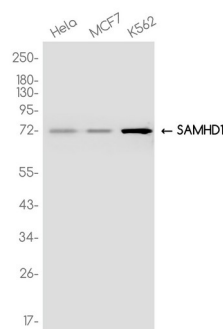


Putative nuclease involved in innate immune response by acting as a negative regulator of the cell-intrinsic antiviral response. May play a role in mediating proinflammatory responses to TNF-alpha signaling.

## Research Area

Microbiology

## Image Data



Western blot analysis of SAMHD1 in HeLa, MCF7, K562 lysates using SAMHD1 antibody.

## Note

For research use only.