

---

## Summary

<b>Production Name</b>	RFC2 Rabbit Monoclonal Antibody
<b>Description</b>	Recombinant Rabbit Monoclonal antibody
<b>Host</b>	Rabbit
<b>Application</b>	WB,ICC/IF,FC
<b>Reactivity</b>	Human, Mouse, Rat

## Performance

<b>Conjugation</b>	Unconjugated
<b>Modification</b>	Unmodified
<b>Isotype</b>	IgG
<b>Clonality</b>	Monoclonal Antibody
<b>Form</b>	Liquid
<b>Storage</b>	Store at 4°C short term. Aliquot and store at -20°C long term. Avoid freeze/thaw cycles.
<b>Buffer</b>	Liquid in 50mM Tris-Glycine(pH 7.4), 0.15M NaCl, 40%Glycerol, 0.01% sodium azide and 0.05% BSA.
<b>Purification</b>	Affinity Purified

## Immunogen

<b>Gene Name</b>	RFC2 RFC2,Replication factor C subunit 2,Activator 1 40 kDa subunit (A1 40 kDa subunit),Activator 1 subunit 2,Replication factor C 40 kDa subunit (RF-C 40 kDa subunit;
<b>Alternative Names</b>	RFC40)
<b>Gene ID</b>	5982.0
<b>SwissProt ID</b>	P35250

## Application

<b>Dilution Ratio</b>	WB: 1/500-1/1000 IF: 1/50-1/200 FC: 1/50-1/100
<b>Molecular Weight</b>	Calculated MW:39 kDa;Observed MW: 39 kDa

**Product Name: RFC2 Rabbit Monoclonal Antibody**  
**Catalog #: AMRe03977**



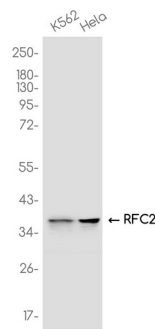
## Background

The elongation of primed DNA templates by DNA polymerase delta and epsilon requires the action of the accessory proteins proliferating cell nuclear antigen (PCNA) and activator 1. This subunit binds ATP (By similarity).

## Research Area

Epigenetics and Nuclear Signaling

## Image Data



Western blot analysis of RFC2 in K562, HeLa lysates using RFC2 antibody.

## Note

For research use only.