

**Product Name: IKK alpha/beta Rabbit Monoclonal Antibody**  
**Catalog #: AMRe03967**

---

## Summary

<b>Production Name</b>	IKK alpha/beta Rabbit Monoclonal Antibody
<b>Description</b>	Recombinant Rabbit Monoclonal antibody
<b>Host</b>	Rabbit
<b>Application</b>	WB,IP
<b>Reactivity</b>	Human, Mouse, Rat

## Performance

<b>Conjugation</b>	Unconjugated
<b>Modification</b>	Unmodified
<b>Isotype</b>	IgG
<b>Clonality</b>	Monoclonal Antibody
<b>Form</b>	Liquid
<b>Storage</b>	Store at 4°C short term. Aliquot and store at -20°C long term. Avoid freeze/thaw cycles.
<b>Buffer</b>	Liquid in 50mM Tris-Glycine(pH 7.4), 0.15M NaCl, 40%Glycerol, 0.01% sodium azide and 0.05% BSA.
<b>Purification</b>	Affinity Purified

## Immunogen

<b>Gene Name</b>	CHUK/IKBKB
<b>Alternative Names</b>	CHUK; IKKA; TCF16; Inhibitor of nuclear factor kappa-B kinase subunit alpha; I-kappa-B kinase alpha; IKK-A; IKK-alpha; IkbKA; IkappaB kinase; Conserved helix-loop-helix ubiquitous kinase; I-kappa-B kinase 1; IKK1; Nuclear factor NF-kappa-B
<b>Gene ID</b>	3551
<b>SwissProt ID</b>	O14920

## Application

<b>Dilution Ratio</b>	WB: 1/500-1/1000 IP: 1/20
<b>Molecular Weight</b>	Calculated MW:85,87 kDa;Observed MW: 85,87 kDa

---

**Product Name: IKK alpha/beta Rabbit Monoclonal Antibody**  
**Catalog #: AMRe03967**

---

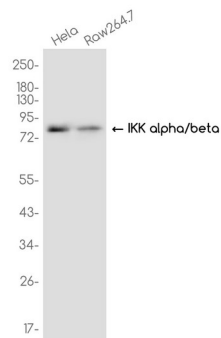
## Background

IKK-beta a kinase of the IKK family. Phosphorylates inhibitors of NF-kappa-B thus leading to the dissociation of the inhibitor/NF-kappa-B complex and ultimately the degradation of the inhibitor. Preferentially found as a heterodimer with IKK-alpha but also as an homodimer.

## Research Area

Signal Transduction

## Image Data



Western blot analysis of IKK alpha/beta in HeLa, Raw264.7 lysates using IKK alpha/beta antibody.

## Note

For research use only.