

Product Name: KLF10 Rabbit Monoclonal Antibody
Catalog #: AMRe03961



Summary

Production Name	KLF10 Rabbit Monoclonal Antibody
Description	Recombinant Rabbit Monoclonal antibody
Host	Rabbit
Application	WB
Reactivity	Human, Mouse, Rat

Performance

Conjugation	Unconjugated
Modification	Unmodified
Isotype	IgG
Clonality	Monoclonal Antibody
Form	Liquid
Storage	Store at 4°C short term. Aliquot and store at -20°C long term. Avoid freeze/thaw cycles.
Buffer	Liquid in 50mM Tris-Glycine(pH 7.4), 0.15M NaCl, 40%Glycerol, 0.01% sodium azide and 0.05% BSA.
Purification	Affinity Purified

Immunogen

Gene Name	KLF10
Alternative Names	EGR alpha; EGRA; Egral; EGRalpha; Gdnfif; KLF10; mGIF; TIEG; TIEG1
Gene ID	7071
SwissProt ID	Q13118

Application

Dilution Ratio	WB: 1/500-1/1000
Molecular Weight	Calculated MW:53 kDa;Observed MW: 53 kDa

Background

Product Name: KLF10 Rabbit Monoclonal Antibody
Catalog #: AMRe03961

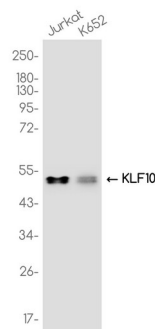


Transcriptional repressor which binds to the consensus sequence 5'-GGTGTG-3'. Plays a role in the regulation of the circadian clock; binds to the GC box sequence in the promoter of the core clock component ARTNL/BMAL1 and represses its transcriptional activity.

Research Area

Epigenetics and Nuclear Signaling

Image Data



Western blot analysis of KLF10 in Jurkat, K652 lysates using KLF10 antibody.

Note

For research use only.