

Summary

Production Name	SOX1 Rabbit Monoclonal Antibody
Description	Recombinant Rabbit Monoclonal antibody
Host	Rabbit
Application	WB,ICC/IF,FC
Reactivity	Human, Mouse, Rat

Performance

Conjugation	Unconjugated
Modification	Unmodified
Isotype	IgG
Clonality	Monoclonal Antibody
Form	Liquid
Storage	Store at 4°C short term. Aliquot and store at -20°C long term. Avoid freeze/thaw cycles.
Buffer	Liquid in 50mM Tris-Glycine(pH 7.4), 0.15M NaCl, 40%Glycerol, 0.01% sodium azide and 0.05% BSA.
Purification	Affinity Purified

Immunogen

Gene Name	SOX1
Alternative Names	Sex determining region Y box 1; sox1; SRY; SRY box containing gene 1; SRY related HMG box gene 1; Transcription factor Sox-1
Gene ID	6656
SwissProt ID	O00570

Application

Dilution Ratio	WB: 1/500-1/1000 IF: 1/50-1/200 FC: 1/50-1/100
Molecular Weight	Calculated MW:39 kDa;Observed MW: 39 kDa

Product Name: SOX1 Rabbit Monoclonal Antibody
Catalog #: AMRe03960



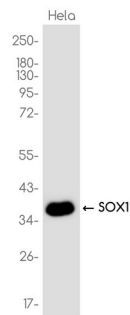
Background

Sox (Sry-related box) genes encode a family of transcription factors that play a myriad of roles in developmental processes. Sox1 and Sox2 are the earliest markers that identify neuroectodermal tissue, and these markers, together with Sox9 collectively mark neuronal stem cells (NSC's) that are present in neurogenically active areas of the mature rodent brain. Sox1 is thought to maintain the cell cycle and promote self renewal in NSCs.

Research Area

Epigenetics and Nuclear Signaling

Image Data



Western blot analysis of SOX1 in HeLa lysates using SOX1 antibody.

Note

For research use only.