

---

## Summary

<b>Production Name</b>	AP2S1 Rabbit Monoclonal Antibody
<b>Description</b>	Recombinant Rabbit Monoclonal antibody
<b>Host</b>	Rabbit
<b>Application</b>	WB,IHC-F,IHC-P,IP
<b>Reactivity</b>	Human, Mouse, Rat

## Performance

<b>Conjugation</b>	Unconjugated
<b>Modification</b>	Unmodified
<b>Isotype</b>	IgG
<b>Clonality</b>	Monoclonal Antibody
<b>Form</b>	Liquid
<b>Storage</b>	Store at 4°C short term. Aliquot and store at -20°C long term. Avoid freeze/thaw cycles.
<b>Buffer</b>	Liquid in 50mM Tris-Glycine(pH 7.4), 0.15M NaCl, 40%Glycerol, 0.01% sodium azide and 0.05% BSA.
<b>Purification</b>	Affinity Purified

## Immunogen

<b>Gene Name</b>	AP2S1
<b>Alternative Names</b>	AP17; AP17 delta; Ap2s1; CLAPS2; Sigma2 adaptin
<b>Gene ID</b>	1175
<b>SwissProt ID</b>	P53680

## Application

<b>Dilution Ratio</b>	WB: 1/500-1/1000 IHC: 1/50-1/100 IP: 1/20
<b>Molecular Weight</b>	Calculated MW:17 kDa;Observed MW: 17 kDa

## Background

---

**Product Name: AP2S1 Rabbit Monoclonal Antibody**  
**Catalog #: AMRe03929**

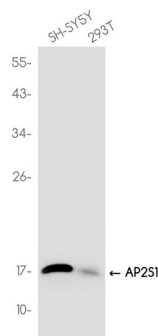


Component of the adaptor protein complex 2 (AP-2). Adaptor protein complexes function in protein Transport via Transport vesicles in different membrane traffic pathways. Adaptor protein complexes are vesicle coat components and appear to be involved in cargo selection and vesicle formation.

## Research Area

Signal Transduction

## Image Data



Western blot analysis of AP2S1 in SH-SY5Y ,293T lysates using AP2S1 antibody.

## Note

For research use only.