

## Summary

<b>Production Name</b>	PRPF8 Rabbit Monoclonal Antibody
<b>Description</b>	Recombinant Rabbit Monoclonal antibody
<b>Host</b>	Rabbit
<b>Application</b>	WB,IHC-F,IHC-P,ICC/IF,FC
<b>Reactivity</b>	Human, Mouse, Rat

## Performance

<b>Conjugation</b>	Unconjugated
<b>Modification</b>	Unmodified
<b>Isotype</b>	IgG
<b>Clonality</b>	Monoclonal Antibody
<b>Form</b>	Liquid
<b>Storage</b>	Store at 4°C short term. Aliquot and store at -20°C long term. Avoid freeze/thaw cycles.
<b>Buffer</b>	Liquid in 50mM Tris-Glycine(pH 7.4), 0.15M NaCl, 40%Glycerol, 0.01% sodium azide and 0.05% BSA.
<b>Purification</b>	Affinity Purified

## Immunogen

<b>Gene Name</b>	PRPF8
<b>Alternative Names</b>	HPRP8; p220; PRP8; PRPC8; Prpf8; RP13; SNRNP220
<b>Gene ID</b>	10594
<b>SwissProt ID</b>	Q6P2Q9

## Application

<b>Dilution Ratio</b>	WB: 1/500-1/1000 IHC: 1/50-1/100 IF: 1/50-1/200 FC: 1/50-1/100
<b>Molecular Weight</b>	Calculated MW:274 kDa;Observed MW: 274 kDa

## Background

**Product Name: PRPF8 Rabbit Monoclonal Antibody**  
**Catalog #: AMRe03920**

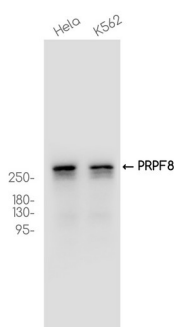


Central component of the spliceosome, which may play a role in aligning the pre-mRNA 5'- and 3'-exons for ligation. Interacts with U5 snRNA, and with pre-mRNA 5'-splice sites in B spliceosomes and 3'-splice sites in C spliceosomes.

## Research Area

Epigenetics and Nuclear Signaling

## Image Data



Western blot analysis of PRPF8 in HeLa, K562 lysates using PRPF8 antibody.

## Note

For research use only.