

## Summary

<b>Production Name</b>	BBS1 Rabbit Monoclonal Antibody
<b>Description</b>	Recombinant Rabbit Monoclonal antibody
<b>Host</b>	Rabbit
<b>Application</b>	WB,ICC/IF
<b>Reactivity</b>	Human, Mouse, Rat

## Performance

<b>Conjugation</b>	Unconjugated
<b>Modification</b>	Unmodified
<b>Isotype</b>	IgG
<b>Clonality</b>	Monoclonal Antibody
<b>Form</b>	Liquid
<b>Storage</b>	Store at 4°C short term. Aliquot and store at -20°C long term. Avoid freeze/thaw cycles.
<b>Buffer</b>	Liquid in 50mM Tris-Glycine(pH 7.4), 0.15M NaCl, 40%Glycerol, 0.01% sodium azide and 0.05% BSA.
<b>Purification</b>	Affinity Purified

## Immunogen

<b>Gene Name</b>	BBS1
<b>Alternative Names</b>	BBS1,BBS2L2,Bardet-Biedl syndrome 1 protein,BBS2-like protein 2
<b>Gene ID</b>	582.0
<b>SwissProt ID</b>	Q8NFJ9

## Application

<b>Dilution Ratio</b>	WB: 1/500-1/1000 IF: 1/50-1/200
<b>Molecular Weight</b>	Calculated MW:65 kDa;Observed MW: 65 kDa

**Product Name: BBS1 Rabbit Monoclonal Antibody**  
**Catalog #: AMRe03917**



## Background

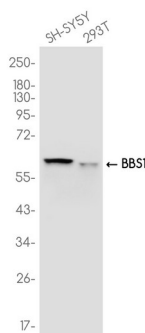
The BBSome complex is thought to function as a coat complex required for sorting of specific membrane proteins to the primary cilia. The BBSome complex is required for ciliogenesis but is dispensable for centriolar satellite function. This ciliogenic function is mediated in part by the Rab8 GDP/GTP exchange factor, which localizes to the basal body and contacts the BBSome. Rab8(GTP) enters the primary cilium and promotes extension of the ciliary membrane. Firstly the BBSome associates with the ciliary membrane and binds to RAB31P/Rabin8, the guanosyl exchange factor (GEF) for Rab8 and then the Rab8-GTP localizes to the cilium and promotes docking and fusion of carrier vesicles to the base of the ciliary membrane. The BBSome complex, together with the LTZL1, controls SMO ciliary trafficking and contributes to the sonic hedgehog (SHH) pathway regulation. Required for proper BBSome complex assembly and its ciliary localization (PubMed:17574030, PubMed:22072986).

Plays a role in olfactory cilium biogenesis/maintenance and trafficking (By similarity).

## Research Area

Neuroscience

## Image Data



Western blot analysis of BBS1 in SH-SY5Y, 293T lysates using BBS1 antibody.

## Note

For research use only.