

Product Name: Phospho-Rb (Ser807) Rabbit Monoclonal Antibody
Catalog #: AMRe03902

Summary

| | |
|------------------------|--|
| Production Name | Phospho-Rb (Ser807) Rabbit Monoclonal Antibody |
| Description | Recombinant Rabbit Monoclonal antibody |
| Host | Rabbit |
| Application | WB,IHC-F,IHC-P,ICC/IF |
| Reactivity | Human, Mouse, Rat |

Performance

| | |
|---------------------|---|
| Conjugation | Unconjugated |
| Modification | Phosphorylated |
| Isotype | IgG |
| Clonality | Monoclonal Antibody |
| Form | Liquid |
| Storage | Store at 4°C short term. Aliquot and store at -20°C long term. Avoid freeze/thaw cycles. |
| Buffer | Liquid in 50mM Tris-Glycine(pH 7.4), 0.15M NaCl, 40%Glycerol, 0.01% sodium azide and 0.05% BSA. |
| Purification | Affinity Purified |

Immunogen

| | |
|--------------------------|---|
| Gene Name | RB1 |
| Alternative Names | RB1; Retinoblastoma-associated protein; p105-Rb; pRb; Rb; pp110 |
| Gene ID | 5925 |
| SwissProt ID | P06400 |

Application

| | |
|-------------------------|---|
| Dilution Ratio | WB: 1/500-1/1000 IHC: 1/50-1/100 IF: 1/50-1/200 |
| Molecular Weight | Calculated MW:106 kDa;Observed MW: 110 kDa |

Product Name: Phospho-Rb (Ser807) Rabbit Monoclonal Antibody
Catalog #: AMRe03902



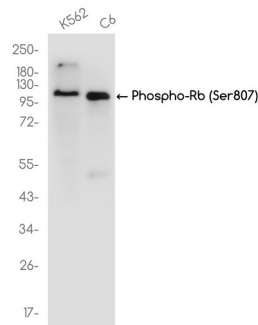
Background

Cell cycle-dependent phosphorylation by a CDK inhibits Rb target binding and allows cell cycle progression. Rb inactivation and subsequent cell cycle progression likely requires an initial phosphorylation by cyclin D-CDK4/6 followed by cyclin E-CDK2 phosphorylation. Specificity of different CDK/cyclin complexes has been observed in vitro and cyclin D1 is required for Ser780 phosphorylation in vivo.

Research Area

Cell Biology

Image Data



Western blot analysis of Phospho-Rb (Ser807) in K562, C6 lysates using Phospho-Rb (Ser807) antibody.

Note

For research use only.