

**Product Name: Phospho-Nrf2 (Ser40) Rabbit
Monoclonal Antibody
Catalog #: AMRe03900**

Summary

Production Name	Phospho-Nrf2 (Ser40) Rabbit Monoclonal Antibody
Description	Recombinant Rabbit Monoclonal antibody
Host	Rabbit
Application	WB,IHC-P,ICC/IF,FC,IP
Reactivity	Human

Performance

Conjugation	Unconjugated
Modification	Phosphorylated
Isotype	IgG
Clonality	Monoclonal Antibody
Form	Liquid
Storage	Store at 4°C short term. Aliquot and store at -20°C long term. Avoid freeze/thaw cycles.
Buffer	Rabbit IgG in phosphate buffered saline , pH 7.4, 150mM NaCl, 0.02% sodium azide and 50% glycerol.
Purification	Affinity Chromatography

Immunogen

Gene Name	NFE2L2
Alternative Names	NFE2L2; NRF2; Nuclear factor erythroid 2-related factor 2; NF-E2-related factor 2; NFE2-related factor 2; HEBP1; Nuclear factor; erythroid derived 2; like 2
Gene ID	4780
SwissProt ID	Q16236

Application

Dilution Ratio	WB: 1/500-1/1000 IHC: 1/50-1/100 IF: 1/50-1/200 IP: 1/50 FC: 1/50-1/100
-----------------------	---

**Product Name: Phospho-Nrf2 (Ser40) Rabbit
Monoclonal Antibody
Catalog #: AMRe03900**

Molecular Weight

Calculated MW: 68 kDa; Observed MW: 90 kDa

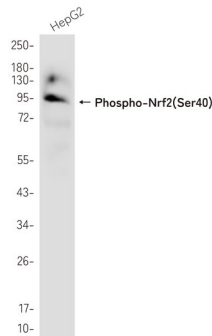
Background

Transcription activator that binds to antioxidant response (ARE) elements in the promoter regions of target genes. Important for the coordinated up-regulation of genes in response to oxidative stress. May be involved in the transcriptional activation of genes of the beta-globin cluster by mediating enhancer activity of hypersensitive site 2 of the beta-globin locus control region.

Research Area

Epigenetics and Nuclear Signaling

Image Data



Western blot analysis of Phospho-Nrf2 (Ser40) in HepG2 lysates using Phospho-Nrf2 (Ser40) antibody.

Note

For research use only.