

Summary

Production Name	ACE2 Rabbit Monoclonal Antibody
Description	Recombinant Rabbit Monoclonal antibody
Host	Rabbit
Application	WB,IHC-P,ICC/IF,IP
Reactivity	Human,Mouse,Rat

Performance

Conjugation	Unconjugated
Modification	Unmodified
Isotype	IgG
Clonality	Monoclonal Antibody
Form	Liquid
Storage	Store at 4°C short term. Aliquot and store at -20°C long term. Avoid freeze/thaw cycles.
Buffer	Rabbit IgG in phosphate buffered saline , pH 7.4, 150mM NaCl, 0.02% sodium azide and 50% glycerol.
Purification	Affinity Chromatography

Immunogen

Gene Name	ACE2
Alternative Names	ACE2; Angiotensin-converting enzyme 2; ACE-related carboxypeptidase; Angiotensin-converting enzyme homolog; ACEH; Metalloprotease MPROT15
Gene ID	59272
SwissProt ID	Q9BYF1

Application

Dilution Ratio	WB: 1/500-1/1000 IHC: 1/50-1/100 IP: 1/50
Molecular Weight	Calculated MW: 92 kDa; Observed MW: 120 kDa

Product Name: ACE2 Rabbit Monoclonal Antibody
Catalog #: AMRe03897



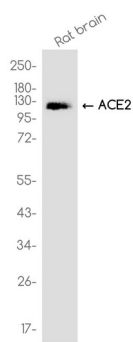
Background

ACE2 is a carboxypeptidase that catalyses the conversion of angiotensin I to angiotensin 1-9, or of angiotensin II to the vasodilator angiotensin 1-7. ACE2 is a critical component in the renin-angiotensin system (RAS). Also able to hydrolyze apelin-13 and dynorphin-13 with high efficiency. May be an important regulator of heart function.

Research Area

Infectious Diseases

Image Data



Western blot analysis of ACE2 in rat brain lysates using ACE2 antibody.

Note

For research use only.