

## Summary

<b>Production Name</b>	SNAP25 Rabbit Monoclonal Antibody
<b>Description</b>	Recombinant Rabbit Monoclonal antibody
<b>Host</b>	Rabbit
<b>Application</b>	WB,ICC/IF,IP
<b>Reactivity</b>	Human,Mouse,Rat

## Performance

<b>Conjugation</b>	Unconjugated
<b>Modification</b>	Unmodified
<b>Isotype</b>	IgG
<b>Clonality</b>	Monoclonal Antibody
<b>Form</b>	Liquid
<b>Storage</b>	Store at 4°C short term. Aliquot and store at -20°C long term. Avoid freeze/thaw cycles.
<b>Buffer</b>	50mM Tris-Glycine(pH 7.4), 0.15M NaCl, 40% Glycerol, 0.01% Sodium azide and 0.05% BSA
<b>Purification</b>	Affinity Purified

## Immunogen

<b>Gene Name</b>	SNAP25
<b>Alternative Names</b>	Synaptosomal-associated protein 25; SNAP-25; Super protein; SUP; Synaptosomal-associated 25 kDa protein; SNAP25; SNAP
<b>Gene ID</b>	6616
<b>SwissProt ID</b>	P60880

## Application

<b>Dilution Ratio</b>	WB: 1/500-1/1000 IF: 1/50-1/200 IP: 1/20
<b>Molecular Weight</b>	Calculated MW: 23 kDa; Observed MW: 23 kDa

**Product Name: SNAP25 Rabbit Monoclonal Antibody**  
**Catalog #: AMRe03813**



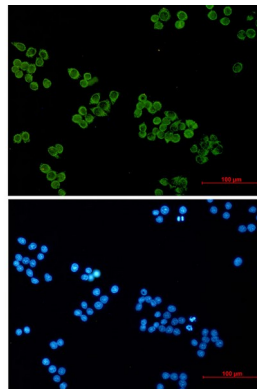
## Background

SNAP25 forms a core complex with the SNARE proteins syntaxin and synaptobrevin to mediate synaptic vesicle fusion with the plasma membrane during  $Ca^{2+}$ -dependent exocytosis. This complex is responsible for exocytosis of the neurotransmitter  $\gamma$ -aminobutyric acid (GABA). Neurotransmitter release is inhibited by proteolysis of SNAP25 by botulinum toxins A and E. SNAP25 plays a secondary role as a Q-SNARE involved in endosome fusion; the protein is associated with genetic susceptibility to attention-deficit hyperactivity disorder (ADHD).

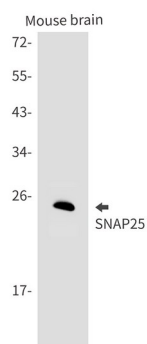
## Research Area

Neuroscience

## Image Data

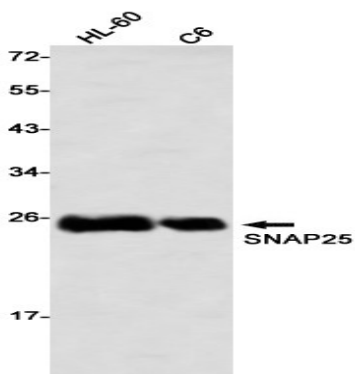


Immunocytochemistry analysis of SNAP25 (green) in HeLa using SNAP25 antibody, and DAPI (blue).



Western blot analysis of SNAP25 in mouse brain lysates using SNAP25 antibody.

Product Name: SNAP25 Rabbit Monoclonal Antibody  
Catalog #: AMRe03813



Western blot analysis of SNAP25 in HL-60, C6 lysates using SNAP25 antibody

**Note**

For research use only.