

**Product Name: Phospho-PKC (Ser660) Rabbit
Monoclonal Antibody
Catalog #: AMRe03806**

Summary

Production Name	Phospho-PKC (Ser660) Rabbit Monoclonal Antibody
Description	Recombinant Rabbit Monoclonal antibody
Host	Rabbit
Application	WB,IHC-P
Reactivity	Human,Rat

Performance

Conjugation	Unconjugated
Modification	Phosphorylated
Isotype	IgG
Clonality	Monoclonal Antibody
Form	Liquid
Storage	Store at 4°C short term. Aliquot and store at -20°C long term. Avoid freeze/thaw cycles.
Buffer	50mM Tris-Glycine(pH 7.4), 0.15M NaCl, 40% Glycerol, 0.01% Sodium azide and 0.05% BSA
Purification	Affinity Purified

Immunogen

Gene Name	PRKCA
Alternative Names	PRKCA; PKCA; PRKACA; Protein kinase C alpha type; PKC-A; PKC-alpha
Gene ID	5578/5579/5580/5581/5583/5588
SwissProt ID	P17252/P05771/Q05655/Q02156/P24723/Q04759

Application

Dilution Ratio	WB: 1/500-1/1000 IHC: 1/50-1/100
Molecular Weight	Calculated MW: 77 kDa; Observed MW: 78-85 kDa

Product Name: Phospho-PKC (Ser660) Rabbit Monoclonal Antibody
Catalog #: AMRe03806

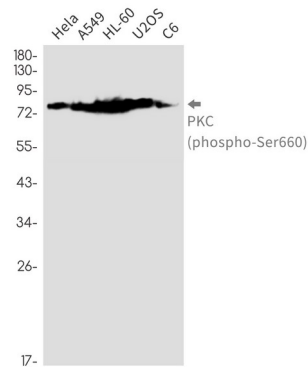
Background

PKC alpha is an AGC kinase of the PKC family. A classical PKC downstream of many mitogenic and receptors. Classical PKCs are calcium-dependent enzymes that are activated by phosphatidylserine, diacylglycerol and phorbol esters.

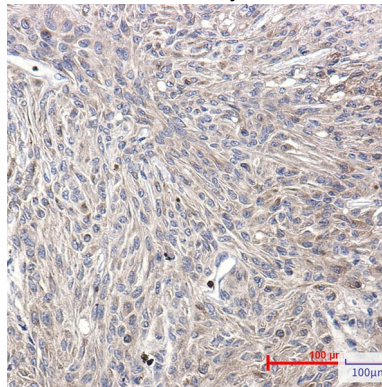
Research Area

Signal Transduction

Image Data



Western blot analysis of PKC (Phospho-Ser660) in Hela, A549, HL-60, U2OS, C6 lysates using Phospho-PKC (Ser660) antibody.



Immunohistochemistry analysis of paraffin-embedded Human Brain using PKC (Phospho-Ser660) antibody. High-pressure and temperature Sodium Citrate pH 6.0 was used for antigen retrieval.

Note

For research use only.