
Summary

Production Name	TOMM20 Rabbit Monoclonal Antibody
Description	Recombinant Rabbit Monoclonal antibody
Host	Rabbit
Application	WB,IHC-F,IHC-P,ICC/IF
Reactivity	Human,Hamster

Performance

Conjugation	Unconjugated
Modification	Unmodified
Isotype	IgG
Clonality	Monoclonal Antibody
Form	Liquid
Storage	Store at 4°C short term. Aliquot and store at -20°C long term. Avoid freeze/thaw cycles.
Buffer	50mM Tris-Glycine(pH 7.4), 0.15M NaCl, 40% Glycerol, 0.01% Sodium azide and 0.05% BSA
Purification	Affinity Purified

Immunogen

Gene Name	TOMM20 TOMM20; KIAA0016; Mitochondrial import receptor subunit TOM20 homolog;
Alternative Names	Mitochondrial 20 kDa outer membrane protein; Outer mitochondrial membrane receptor Tom20
Gene ID	9804
SwissProt ID	Q15388

Application

Dilution Ratio	WB: 1/500-1/1000 IHC: 1/50-1/100 IF: 1/50-1/200
Molecular Weight	Calculated MW: 16 kDa; Observed MW: 16 kDa

Product Name: TOMM20 Rabbit Monoclonal Antibody
Catalog #: AMRe03800



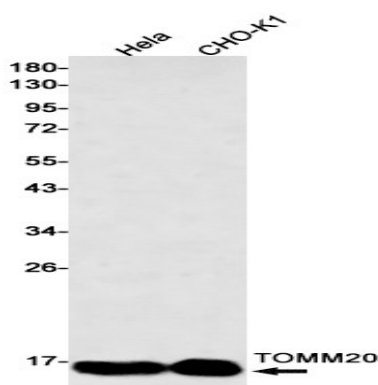
Background

Central component of the receptor complex responsible for the recognition and translocation of cytosolically synthesized mitochondrial preproteins. Together with TOM22 functions as the transit peptide receptor at the surface of the mitochondrion outer membrane and facilitates the movement of preproteins into the TOM40 translocation pore.

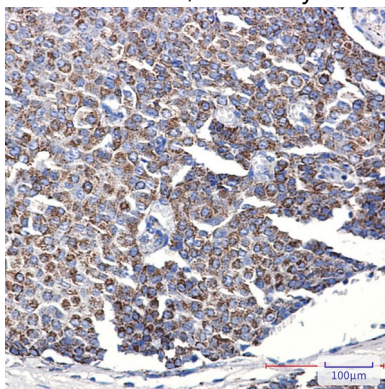
Research Area

Signal Transduction

Image Data

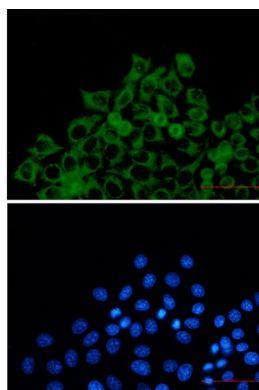


Western blot analysis of TOMM20 in HeLa, CHO-K1 lysates using TOMM20 antibody.



Immunohistochemistry analysis of paraffin-embedded Human breast cancer using TOMM20 antibody. High-pressure and temperature Sodium Citrate pH 6.0 was used for antigen retrieval.

Product Name: TOMM20 Rabbit Monoclonal Antibody
Catalog #: AMRe03800



Immunocytochemistry analysis of TOMM2 (green) in Hela using TOMM20 antibody, and DAPI (blue)

Note

For research use only.