

---

## Summary

<b>Production Name</b>	STAT1 Rabbit Monoclonal Antibody
<b>Description</b>	Recombinant Rabbit Monoclonal antibody
<b>Host</b>	Rabbit
<b>Application</b>	WB,IP
<b>Reactivity</b>	Human,Mouse,Rat

## Performance

<b>Conjugation</b>	Unconjugated
<b>Modification</b>	Unmodified
<b>Isotype</b>	IgG
<b>Clonality</b>	Monoclonal Antibody
<b>Form</b>	Liquid
<b>Storage</b>	Store at 4°C short term. Aliquot and store at -20°C long term. Avoid freeze/thaw cycles.
<b>Buffer</b>	50mM Tris-Glycine(pH 7.4), 0.15M NaCl, 40% Glycerol, 0.01% Sodium azide and 0.05% BSA
<b>Purification</b>	Affinity Purified

## Immunogen

<b>Gene Name</b>	STAT1
<b>Alternative Names</b>	STAT1; Signal transducer and activator of transcription 1-alpha/beta; Transcription factor ISGF-3 components p91/p84
<b>Gene ID</b>	6772
<b>SwissProt ID</b>	P42224

## Application

<b>Dilution Ratio</b>	WB: 1/500-1/1000 IP: 1/20
<b>Molecular Weight</b>	Calculated MW: 87 kDa; Observed MW: 87 kDa

**Product Name: STAT1 Rabbit Monoclonal Antibody**  
**Catalog #: AMRe03798**



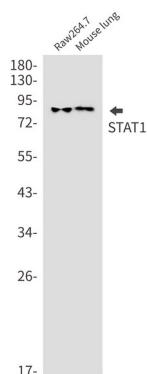
## Background

The protein encoded by this gene is a member of the STAT protein family. In response to cytokines and growth factors, STAT family members are phosphorylated by the receptor associated kinases, and then form homo- or heterodimers that translocate to the cell nucleus where they act as transcription activators.

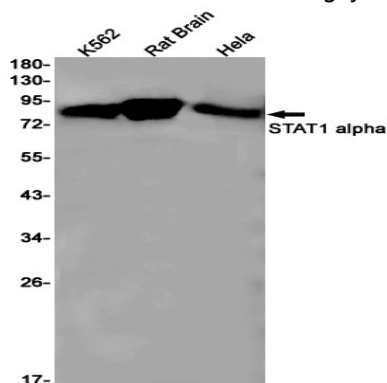
## Research Area

Signal Transduction

## Image Data



Western blot analysis of STAT1 in Raw264.7, mouse lung lysates using STAT1 antibody.



Western blot analysis of STAT1 alpha in K562, rat Brain, HeLa lysates using STAT1 alpha antibody.

## Note

For research use only.