

## Summary

<b>Production Name</b>	Smad2 Rabbit Monoclonal Antibody
<b>Description</b>	Recombinant Rabbit Monoclonal antibody
<b>Host</b>	Rabbit
<b>Application</b>	WB,IHC-F,IHC-P,ICC/IF,IP
<b>Reactivity</b>	Human,Rat,Hamster

## Performance

<b>Conjugation</b>	Unconjugated
<b>Modification</b>	Unmodified
<b>Isotype</b>	IgG
<b>Clonality</b>	Monoclonal Antibody
<b>Form</b>	Liquid
<b>Storage</b>	Store at 4°C short term. Aliquot and store at -20°C long term. Avoid freeze/thaw cycles.
<b>Buffer</b>	50mM Tris-Glycine(pH 7.4), 0.15M NaCl, 40% Glycerol, 0.01% Sodium azide and 0.05% BSA
<b>Purification</b>	Affinity Purified

## Immunogen

<b>Gene Name</b>	SMAD2 SMAD2; MADH2; MADR2; Mothers against decapentaplegic homolog 2; MAD
<b>Alternative Names</b>	homolog 2; Mothers against DPP homolog 2; JV18-1; Mad-related protein 2; hMAD-2; SMAD family member 2; SMAD 2; Smad2; hSMAD2
<b>Gene ID</b>	4087
<b>SwissProt ID</b>	Q15796

## Application

<b>Dilution Ratio</b>	WB: 1/500-1/1000 IHC: 1/50-1/100 IF: 1/50-1/200 IP: 1/20
<b>Molecular Weight</b>	Calculated MW: 52 kDa; Observed MW: 52 kDa

**Product Name: Smad2 Rabbit Monoclonal Antibody**  
**Catalog #: AMRe03795**



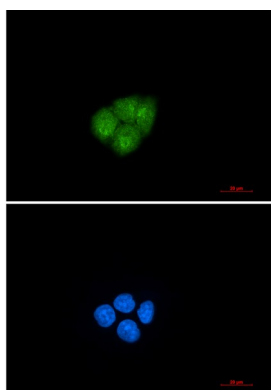
## Background

The protein encoded by this gene belongs to the SMAD, a family of proteins similar to the gene products of the *Drosophila* gene 'mothers against decapentaplegic' (Mad) and the *C. elegans* gene Sma. SMAD proteins are signal transducers and transcriptional modulators that mediate multiple signaling pathways.

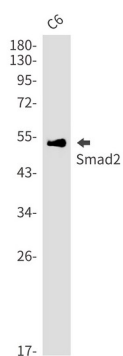
## Research Area

Signal Transduction

## Image Data

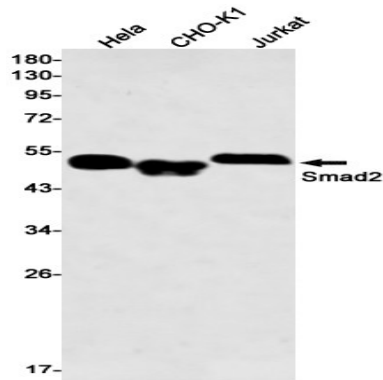


Immunocytochemistry analysis of Smad2 (green) in HeLa using Smad2 antibody, and DAPI (blue).

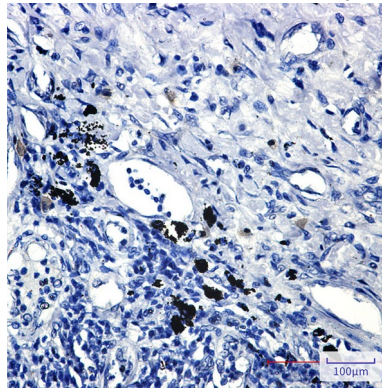


Western blot analysis of Smad2 in C6 lysates using Smad2 antibody.

**Product Name: Smad2 Rabbit Monoclonal Antibody**  
**Catalog #: AMRe03795**



Western blot analysis of Smad2 in HeLa, CHO-K1, Jurkat lysates using Smad2 antibody



Immunohistochemistry analysis of paraffin-embedded Human lung cancer using Smad2 antibody. High-pressure and temperature Sodium Citrate pH 6.0 was used for antigen retrieval.

## **Note**

For research use only.