

**Product Name: Lactate Dehydrogenase A Rabbit  
Monoclonal Antibody  
Catalog #: AMRe03782**

---

## Summary

<b>Production Name</b>	Lactate Dehydrogenase A Rabbit Monoclonal Antibody
<b>Description</b>	Recombinant Rabbit Monoclonal antibody
<b>Host</b>	Rabbit
<b>Application</b>	WB,IHC-F,IHC-P,ICC/IF,IP
<b>Reactivity</b>	Human,Mouse,Rat

## Performance

<b>Conjugation</b>	Unconjugated
<b>Modification</b>	Unmodified
<b>Isotype</b>	IgG
<b>Clonality</b>	Monoclonal Antibody
<b>Form</b>	Liquid
<b>Storage</b>	Store at 4°C short term. Aliquot and store at -20°C long term. Avoid freeze/thaw cycles.
<b>Buffer</b>	50mM Tris-Glycine(pH 7.4), 0.15M NaCl, 40% Glycerol, 0.01% Sodium azide and 0.05% BSA
<b>Purification</b>	Affinity Purified

## Immunogen

<b>Gene Name</b>	LDHA
<b>Alternative Names</b>	LDHA; LDH-M; LDH1; PIG19; GSD11; TRG5; Proliferation inducing gene 19
<b>Gene ID</b>	3939
<b>SwissProt ID</b>	P00338

## Application

<b>Dilution Ratio</b>	WB: 1/500-1/1000 IHC: 1/50-1/100 IF: 1/50-1/200 IP: 1/20
<b>Molecular Weight</b>	Calculated MW: 37 kDa; Observed MW: 37 kDa

**Product Name: Lactate Dehydrogenase A Rabbit  
Monoclonal Antibody  
Catalog #: AMRe03782**

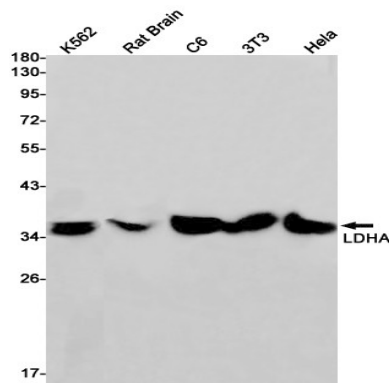
## Background

Lactate dehydrogenase (LDH) catalyzes the interconversion of pyruvate and NADH to lactate and NAD<sup>+</sup>. When the oxygen supply is too low for mitochondrial ATP production, this reaction recycles NADH generated in glycolysis to NAD<sup>+</sup>, which reenters glycolysis. The major form of LDH found in muscle cells is the A (LDHA) isozyme.

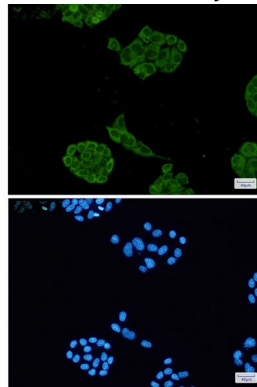
## Research Area

Signal Transduction

## Image Data

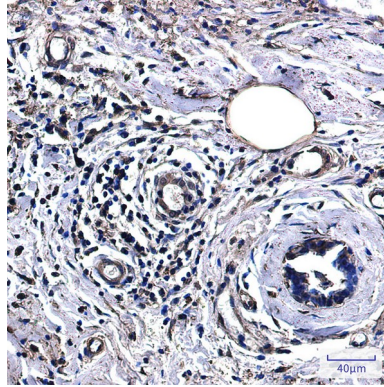


Western blot analysis of LDHA in K562, rat Brain, C6, 3T3, HeLa lysates using Lactate Dehydrogenase A antibody.



Immunocytochemistry analysis of Lactate Dehydrogenase(green) in HeLa using Lactate Dehydrogenase antibody, and DAPI(blue)

**Product Name: Lactate Dehydrogenase A Rabbit  
Monoclonal Antibody  
Catalog #: AMRe03782**



Immunohistochemistry analysis of paraffin-embedded Human breast cancer using Lactate Dehydrogenase antibody. High-pressure and temperature Sodium Citrate pH 6.0 was used for antigen retrieval.

**Note**

For research use only.