

Product Name: Citrate Synthetase Rabbit Monoclonal Antibody
Catalog #: AMRe03766



Summary

Production Name	Citrate Synthetase Rabbit Monoclonal Antibody
Description	Recombinant Rabbit Monoclonal antibody
Host	Rabbit
Application	WB,IHC-F,IHC-P,ICC/IF
Reactivity	Human,Mouse,Rat

Performance

Conjugation	Unconjugated
Modification	Unmodified
Isotype	IgG
Clonality	Monoclonal Antibody
Form	Liquid
Storage	Store at 4°C short term. Aliquot and store at -20°C long term. Avoid freeze/thaw cycles.
Buffer	50mM Tris-Glycine(pH 7.4), 0.15M NaCl, 40% Glycerol, 0.01% Sodium azide and 0.05% BSA
Purification	Affinity Purified

Immunogen

Gene Name	CS
Alternative Names	Citrate synthase; Citrate synthase; mitochondrial; Cs
Gene ID	1431
SwissProt ID	O75390

Application

Dilution Ratio	WB: 1/500-1/1000 IHC: 1/50-1/100 IF: 1/50-1/200
Molecular Weight	Calculated MW: 52 kDa; Observed MW: 45 kDa

Product Name: Citrate Synthetase Rabbit Monoclonal Antibody
Catalog #: AMRe03766



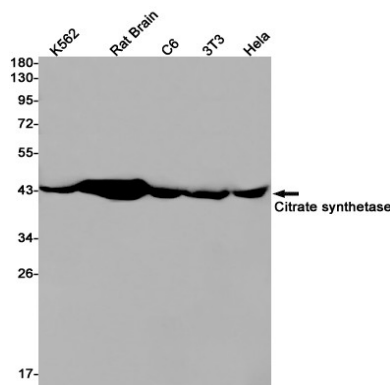
Background

Carbohydrate metabolism; tricarboxylic acid cycle; isocitrate from oxaloacetate: step 1/2.

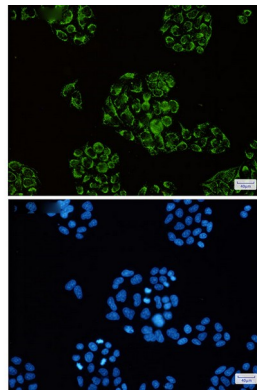
Research Area

Signal Transduction

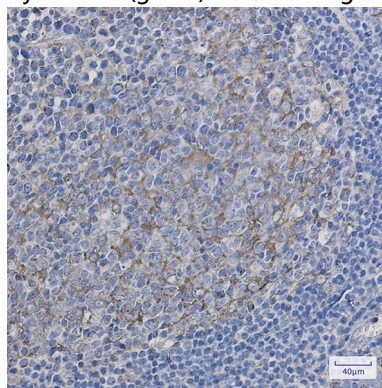
Image Data



Western blot analysis of Citrate synthetase in K562, rat Brain, C6, 3T3, HeLa lysates using Citrate Synthetase antibody.



Immunocytochemistry analysis of Citrate synthetase (green) in HeLa using Citrate synthetase antibody, and DAPI (blue)



Immunohistochemistry analysis of paraffin-embedded Human tonsil using Citrate synthetase antibody. High-pressure and

**Product Name: Citrate Synthetase Rabbit Monoclonal
Antibody**
Catalog #: AMRe03766



temperature Sodium Citrate pH 6.0 was used for antigen retrieval.

Note

For research use only.