

**Product Name: Cathepsin B Rabbit Monoclonal Antibody**  
**Catalog #: AMRe03763**

---

## Summary

<b>Production Name</b>	Cathepsin B Rabbit Monoclonal Antibody
<b>Description</b>	Recombinant Rabbit Monoclonal antibody
<b>Host</b>	Rabbit
<b>Application</b>	WB,ICC/IF
<b>Reactivity</b>	Mouse,Rat

## Performance

<b>Conjugation</b>	Unconjugated
<b>Modification</b>	Unmodified
<b>Isotype</b>	IgG
<b>Clonality</b>	Monoclonal Antibody
<b>Form</b>	Liquid
<b>Storage</b>	Store at 4°C short term. Aliquot and store at -20°C long term. Avoid freeze/thaw cycles.
<b>Buffer</b>	50mM Tris-Glycine(pH 7.4), 0.15M NaCl, 40% Glycerol, 0.01% Sodium azide and 0.05% BSA
<b>Purification</b>	Affinity Purified

## Immunogen

<b>Gene Name</b>	Ctsb
<b>Alternative Names</b>	CB
<b>Gene ID</b>	13030.0
<b>SwissProt ID</b>	P10605

## Application

<b>Dilution Ratio</b>	WB: 1/500-1/1000 IF: 1/50-1/200
<b>Molecular Weight</b>	Calculated MW: 37 kDa; Observed MW: 44,27,24 kDa

**Product Name: Cathepsin B Rabbit Monoclonal Antibody**  
**Catalog #: AMRe03763**

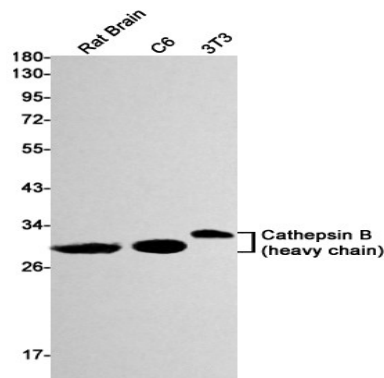
## Background

Thiol protease which is believed to participate in intracellular degradation and turnover of proteins. Cleaves matrix extracellular phosphoglycoprotein MEPE. Has also been implicated in tumor invasion and metastasis.

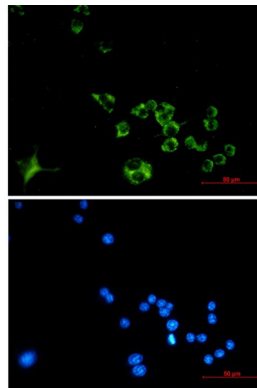
## Research Area

Neuroscience

## Image Data



Western blot analysis of Cathepsin B in rat Brain, C6, 3T3 lysates using Cathepsin B antibody.



Immunocytochemistry analysis of Cathepsin B (green) in Raw264.7 using Cathepsin B antibody, and DAPI (blue)

## Note

For research use only.