

**Product Name: alpha Smooth Muscle Actin Rabbit  
Monoclonal Antibody  
Catalog #: AMRe03761**

---

## Summary

<b>Production Name</b>	alpha Smooth Muscle Actin Rabbit Monoclonal Antibody
<b>Description</b>	Recombinant Rabbit Monoclonal antibody
<b>Host</b>	Rabbit
<b>Application</b>	WB,IHC-P
<b>Reactivity</b>	Human,Mouse,Rat

## Performance

<b>Conjugation</b>	Unconjugated
<b>Modification</b>	Unmodified
<b>Isotype</b>	IgG
<b>Clonality</b>	Monoclonal Antibody
<b>Form</b>	Liquid
<b>Storage</b>	Store at 4°C short term. Aliquot and store at -20°C long term. Avoid freeze/thaw cycles.
<b>Buffer</b>	50mM Tris-Glycine(pH 7.4), 0.15M NaCl, 40% Glycerol, 0.01% Sodium azide and 0.05% BSA
<b>Purification</b>	Affinity Purified

## Immunogen

<b>Gene Name</b>	ACTA2
<b>Alternative Names</b>	ACTA2; ACTSA; ACTVS; GIG46; Actin; aortic smooth muscle; Alpha-actin-2; Cell growth-inhibiting gene 46 protein; $\alpha$ -SMA
<b>Gene ID</b>	59
<b>SwissProt ID</b>	P62736

## Application

<b>Dilution Ratio</b>	WB: 1/500-1/1000 IHC: 1/50-1/100
<b>Molecular Weight</b>	Calculated MW: 42 kDa; Observed MW: 42 kDa

**Product Name: alpha Smooth Muscle Actin Rabbit  
Monoclonal Antibody  
Catalog #: AMRe03761**

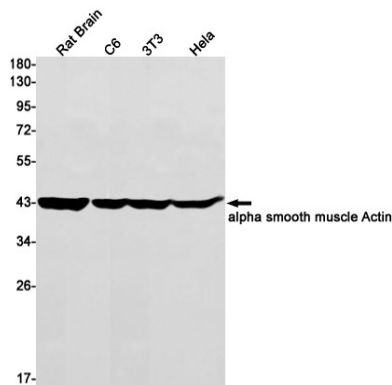
## Background

Involved in the interaction of plaque proteins and intermediate filaments mediating cell-cell adhesion. Defects in ACTA2 are the cause of aortic aneurysm familial thoracic type 6 (AAT6) [MIM:611788]. They are primarily associated with a characteristic histologic appearance known as 'medial necrosis' or 'Erdheim cystic medial necrosis' in which there is degeneration and fragmentation of elastic fibers, loss of smooth muscle cells, and an accumulation of basophilic ground substance.

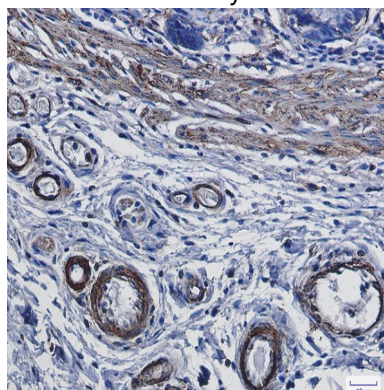
## Research Area

Signal Transduction

## Image Data



Western blot analysis of alpha smooth muscle Actin in rat Brain, C6, 3T3, HeLa lysates using alpha Smooth Muscle Actin antibody.



Immunohistochemistry analysis of paraffin-embedded Human colon cancer using alpha smooth muscle Actin antibody. High-pressure and temperature Sodium Citrate pH 6.0 was used for antigen retrieval.

**Product Name: alpha Smooth Muscle Actin Rabbit  
Monoclonal Antibody  
Catalog #: AMRe03761**

---



**Note**

For research use only.