

**Product Name: AKT Rabbit Monoclonal Antibody**  
**Catalog #: AMRe03759**



## Summary

|                        |  |
|------------------------|--|
| <b>Production Name</b> | AKT Rabbit Monoclonal Antibody         |
| <b>Description</b>     | Recombinant Rabbit Monoclonal antibody |
| <b>Host</b>            | Rabbit                                 |
| <b>Application</b>     | WB,IHC-F,IHC-P,ICC/IF,IP               |
| <b>Reactivity</b>      | Human,Mouse,Rat,Hamster                |

## Performance

|                     |  |
|---------------------|--|
| <b>Conjugation</b>  | Unconjugated   |
| <b>Modification</b> | Unmodified   |
| <b>Isotype</b>      | IgG  |
| <b>Clonality</b>    | Monoclonal Antibody  |
| <b>Form</b>         | Liquid   |
| <b>Storage</b>      | Store at 4°C short term. Aliquot and store at -20°C long term. Avoid freeze/thaw cycles. |
| <b>Buffer</b>       | 50mM Tris-Glycine(pH 7.4), 0.15M NaCl, 40% Glycerol, 0.01% Sodium azide and 0.05% BSA    |
| <b>Purification</b> | Affinity Purified  |

## Immunogen

|                          |                      |
|--------------------------|----------------------|
| <b>Gene Name</b>         | AKT1/AKT2/AKT3       |
| <b>Alternative Names</b> | AKT1                 |
| <b>Gene ID</b>           | 207/208/10000        |
| <b>SwissProt ID</b>      | P31749/P31751/Q9Y243 |

## Application

|                         |  |
|-------------------------|--|
| <b>Dilution Ratio</b>   | WB: 1/500-1/1000 IHC: 1/50-1/100 IF: 1/50-1/200 IP: 1/20 |
| <b>Molecular Weight</b> | Calculated MW: 56 kDa; Observed MW: 56 kDa               |

## Background

**Product Name: AKT Rabbit Monoclonal Antibody**  
**Catalog #: AMRe03759**

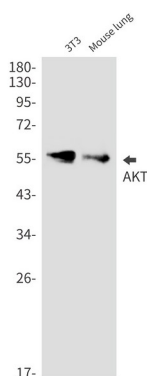


Akt, also referred to as PKB or Rac, plays a critical role in controlling survival and apoptosis. This protein kinase is activated by insulin and various growth and survival factors to function in a wortmannin-sensitive pathway involving PI3 kinase. Akt is activated by phospholipid binding and activation loop phosphorylation at Thr308 by PDK1 and by phosphorylation within the carboxy terminus at Ser473.

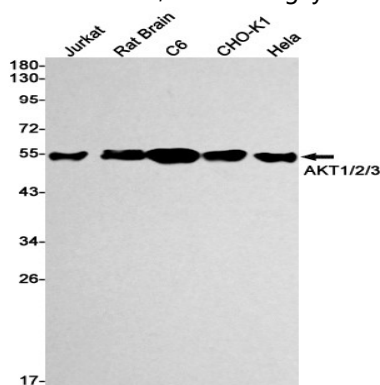
## Research Area

Signal Transduction

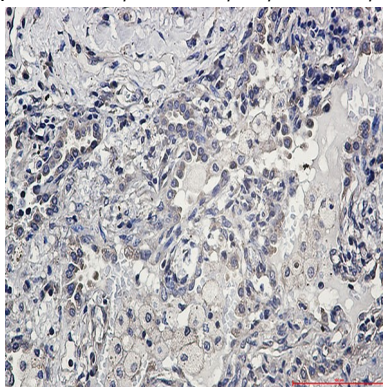
## Image Data



Western blot analysis of AKT in 3T3, mouse lung lysates using AKT antibody.



Western blot analysis of AKT1/2/3 in Jurkat, rat Brain, C6, CHO-K1, HeLa lysates using AKT antibody.



**Product Name: AKT Rabbit Monoclonal Antibody**  
**Catalog #: AMRe03759**



---

Immunohistochemistry analysis of paraffin-embedded Human lung cancer using AKT1/2/3 antibody. High-pressure and temperature Sodium Citrate pH 6.0 was used for antigen retrieval.

**Note**

For research use only.