

## Summary

<b>Production Name</b>	mtTFA Rabbit Monoclonal Antibody
<b>Description</b>	Recombinant Rabbit Monoclonal antibody
<b>Host</b>	Rabbit
<b>Application</b>	WB,IHC-F,IHC-P,ICC/IF,IP
<b>Reactivity</b>	Human

## Performance

<b>Conjugation</b>	Unconjugated
<b>Modification</b>	Unmodified
<b>Isotype</b>	IgG
<b>Clonality</b>	Monoclonal Antibody
<b>Form</b>	Liquid
<b>Storage</b>	Store at 4°C short term. Aliquot and store at -20°C long term. Avoid freeze/thaw cycles.
<b>Buffer</b>	50mM Tris-Glycine(pH 7.4), 0.15M NaCl, 40% Glycerol, 0.01% Sodium azide and 0.05% BSA
<b>Purification</b>	Affinity Purified

## Immunogen

<b>Gene Name</b>	TFAM
<b>Alternative Names</b>	MtTF1; mtTFA; TCF6; TCF6L1; TCF6L2; TCF6L3; TFAM; Transcription factor 6
<b>Gene ID</b>	7019
<b>SwissProt ID</b>	Q00059

## Application

<b>Dilution Ratio</b>	WB: 1/500-1/1000 IHC: 1/50-1/100 IF: 1/50-1/200 IP: 1/20
<b>Molecular Weight</b>	Calculated MW: 29 kDa; Observed MW: 24 kDa

## Background

**Product Name: mtTFA Rabbit Monoclonal Antibody**  
**Catalog #: AMRe03740**

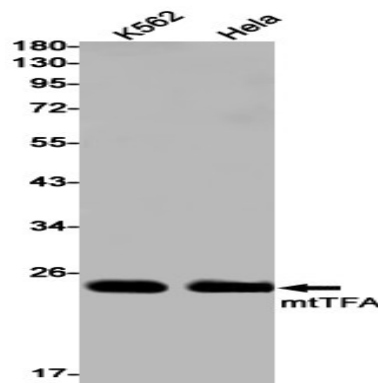


Binds to the mitochondrial light strand promoter and functions in mitochondrial transcription regulation. Required for accurate and efficient promoter recognition by the mitochondrial RNA polymerase.

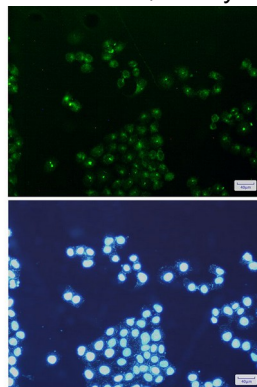
## Research Area

Tags & Cell Markers

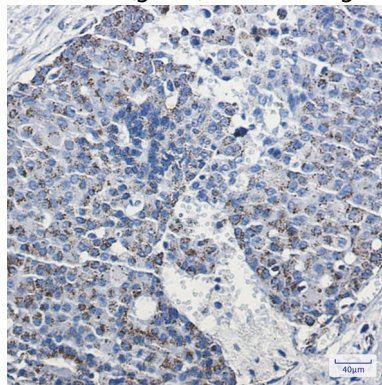
## Image Data



Western blot analysis of mtTFA in K562, HeLa lysates using mtTFA antibody.



Immunocytochemistry analysis of mtTFA/TFAM (green) in HeLa using mtTFA/TFAM antibody, and DAPI (blue)



Immunohistochemistry analysis of paraffin-embedded Human breast cancer using mtTFA antibody. High-pressure and temperature Sodium Citrate pH 6.0 was used for antigen retrieval.

**Product Name: mtTFA Rabbit Monoclonal Antibody**  
**Catalog #: AMRe03740**

---



**Note**

For research use only.