

Product Name: Rabbit IgG (5B2) Mouse Monoclonal Antibody
Catalog #: AMRe03532



Summary

Production Name	Rabbit IgG (5B2) Mouse Monoclonal Antibody
Description	Primary antibody
Host	Mouse
Application	WB,ELISA
Reactivity	Rabbit

Performance

Conjugation	Unconjugated
Modification	Unmodified
Isotype	IgG1
Clonality	Monoclonal Antibody
Form	Liquid
Storage	Store at 4°C short term. Aliquot and store at -20°C long term. Avoid freeze/thaw cycles.
Buffer	Liquid in PBS containing 50% glycerol, 0.5% BSA and 0.02% sodium azide, pH 7.3.
Purification	Affinity Purified

Immunogen

Gene Name	Rabbit IgG
Alternative Names	Antibody; Ig gamma chain C region; Ig kappa-b4 chain C region; Ig kappa-b5 chain C region; Ig kappa-b9 chain C region; Ig lambda chain C region; K-BAS.
Gene ID	-
SwissProt ID	-

Application

Dilution Ratio	WB: 1/500-1/1000 ELISA: 1/10000
Molecular Weight	Calculated MW: 55,25 kDa; Observed MW: 55,25 kDa

Product Name: Rabbit IgG (5B2) Mouse Monoclonal Antibody
Catalog #: AMRe03532



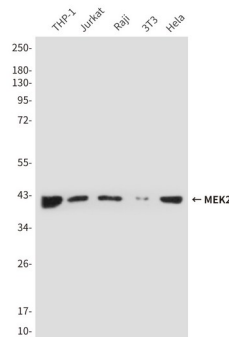
Background

Constant region of immunoglobulin heavy chains. Immunoglobulins, also known as antibodies, are membrane-bound or secreted glycoproteins produced by B lymphocytes.

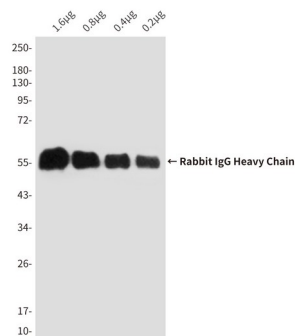
Research Area

Immunology

Image Data

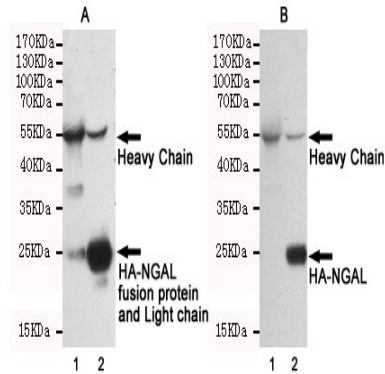


Western blot analysis of MEK2 in THP-1, Jurkat, Raji, 3T3 and Hela lysates using MEK2 antibody, then incubated with 201069(Rabbit IgG mAb).Anti-mouse IgG, HRPlinked antibody was used for detecting.



Western blot analysis of Rabbit IgG (5B2) in decreasing concentrations of total rabbit IgG reduced and denatured in 2X SDS loading buffer with DTT using IgG (HeavyChain Specific)antibody.

Product Name: Rabbit IgG (5B2) Mouse Monoclonal Antibody
Catalog #: AMRe03532



Immunoprecipitation analysis of Rabbit IgG (5B2) in CHO-K1 lysates transfected with HA-tagged NGAL using HATag antibody (lane 2). Lane 1 contains rabbit IgG IP control lysates. All lanes are probed with HATag antibody as the primary antibody. Panel A incubated with secondary antibodies anti-rabbit whole IgG, HRPlinked antibody for detecting. Panel B incubated with anti-rabbit IgG (HeavyChain Specific) mAb and the Anti-mouse whole IgG, HRPlinked antibody was used for detecting.

Note

For research use only.