

Summary

Production Name	SRSF3 Rabbit Monoclonal Antibody
Description	Recombinant Rabbit Monoclonal antibody
Host	Rabbit
Application	WB,IHC-P
Reactivity	Human,Mouse,Rat

Performance

Conjugation	Unconjugated
Modification	Unmodified
Isotype	IgG
Clonality	Monoclonal Antibody
Form	Liquid
Storage	Store at 4°C short term. Aliquot and store at -20°C long term. Avoid freeze/thaw cycles.
Buffer	50mM Tris-Glycine(pH 7.4), 0.15M NaCl, 40% Glycerol, 0.01% Sodium azide and 0.05% BSA
Purification	Affinity Purified

Immunogen

Gene Name	SRSF3
Alternative Names	SRSF3; SFRS3; SRP20; Serine/arginine-rich splicing factor 3; Pre-mRNA-splicing factor SRP20; Splicing factor; arginine/serine-rich 3
Gene ID	6428
SwissProt ID	P84103

Application

Dilution Ratio	WB: 1/500-1/1000 IHC: 1/50-1/100
Molecular Weight	Calculated MW: 19 kDa; Observed MW: 19 kDa

Product Name: SRSF3 Rabbit Monoclonal Antibody
Catalog #: AMRe03300



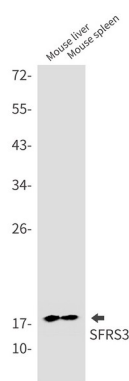
Background

May be involved in RNA processing in relation with cellular proliferation and/or maturation.

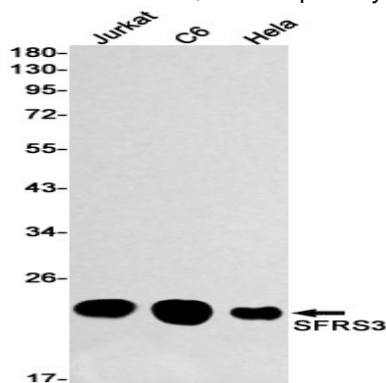
Research Area

Epigenetics and Nuclear Signaling

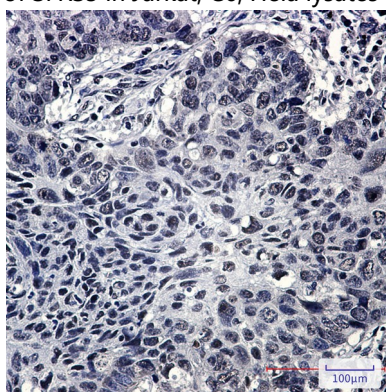
Image Data



Western blot analysis of SRSF3 in mouse liver, mouse spleen lysates using SRSF3 antibody.



Western blot analysis of SRSF3 in Jurkat, C6, HeLa lysates using SRSF3 antibody.



Immunohistochemistry analysis of paraffin-embedded Human lung cancer using SRSF3 antibody. High-pressure and temperature Sodium Citrate pH 6.0 was used for antigen retrieval.

Product Name: SRSF3 Rabbit Monoclonal Antibody
Catalog #: AMRe03300



Note

For research use only.