

Summary

Production Name	MCL1 Rabbit Monoclonal Antibody
Description	Recombinant Rabbit Monoclonal antibody
Host	Rabbit
Application	WB,ICC/IF,IP
Reactivity	Human,Rat

Performance

Conjugation	Unconjugated
Modification	Unmodified
Isotype	IgG
Clonality	Monoclonal Antibody
Form	Liquid
Storage	Store at 4°C short term. Aliquot and store at -20°C long term. Avoid freeze/thaw cycles.
Buffer	50mM Tris-Glycine(pH 7.4), 0.15M NaCl, 40% Glycerol, 0.01% Sodium azide and 0.05% BSA
Purification	Affinity Purified

Immunogen

Gene Name	MCL1
Alternative Names	MCL1; BCL2L3; Induced myeloid leukemia cell differentiation protein Mcl-1; Bcl-2-like protein 3; Bcl2-L-3; Bcl-2-related protein EAT/mcl1; mcl1/EAT
Gene ID	4170
SwissProt ID	Q07820

Application

Dilution Ratio	WB: 1/500-1/1000 IF: 1/50-1/200 IP: 1/20
Molecular Weight	Calculated MW: 37 kDa; Observed MW: 40 kDa

Product Name: MCL1 Rabbit Monoclonal Antibody
Catalog #: AMRe03283



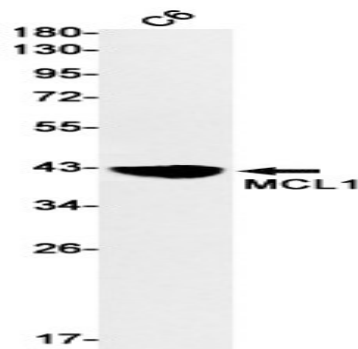
Background

MCL1 a myeloid cell leukemia protein of the Bcl-2 family of proteins. Two alternatively spliced transcripts encoding distinct isoforms have been identified. The longer gene product (isoform 1) enhances cell survival by inhibiting apoptosis while the alternatively spliced shorter gene product (isoform 2) promotes apoptosis and is death-inducing.

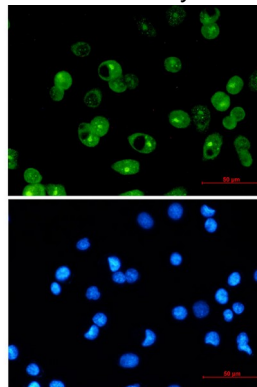
Research Area

Cell Biology

Image Data



Western blot analysis of MCL1 in C6 lysates using MCL1 antibody.



Immunocytochemistry analysis of MCL1 (green) in MCF-7 using MCL1 antibody, and DAPI (blue)

Note

For research use only.