

---

## Summary

<b>Production Name</b>	PKC beta 2 Rabbit Monoclonal Antibody
<b>Description</b>	Recombinant Rabbit Monoclonal antibody
<b>Host</b>	Rabbit
<b>Application</b>	WB,IHC-F,IHC-P,ICC/IF,IP
<b>Reactivity</b>	Human,Rat

## Performance

<b>Conjugation</b>	Unconjugated
<b>Modification</b>	Unmodified
<b>Isotype</b>	IgG
<b>Clonality</b>	Monoclonal Antibody
<b>Form</b>	Liquid
<b>Storage</b>	Store at 4°C short term. Aliquot and store at -20°C long term. Avoid freeze/thaw cycles.
<b>Buffer</b>	50mM Tris-Glycine(pH 7.4), 0.15M NaCl, 40% Glycerol, 0.01% Sodium azide and 0.05% BSA
<b>Purification</b>	Affinity Purified

## Immunogen

<b>Gene Name</b>	PRKCB
<b>Alternative Names</b>	PRKCB; PKCB; PRKCB1; Protein kinase C beta type; PKC-B; PKC-beta
<b>Gene ID</b>	5579
<b>SwissProt ID</b>	P05771

## Application

<b>Dilution Ratio</b>	WB: 1/500-1/1000 IHC: 1/50-1/100 IF: 1/50-1/200 IP: 1/20
<b>Molecular Weight</b>	Calculated MW: 77 kDa; Observed MW: 77 kDa

## Background

---

**Product Name: PKC beta 2 Rabbit Monoclonal Antibody**  
**Catalog #: AMRe03264**

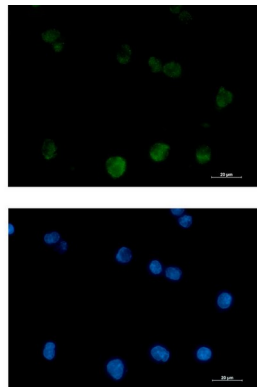


Calcium-activated, phospholipid- and diacylglycerol (DAG)-dependent serine/threonine-protein kinase involved in various cellular processes such as regulation of the B-cell receptor (BCR) signalosome, oxidative stress-induced apoptosis, androgen receptor-dependent transcription regulation, insulin signaling and endothelial cells proliferation. Plays a key role in B-cell activation by regulating BCR-induced NF-kappa-B activation. Mediates the activation of the canonical NF-kappa-B pathway (NFKB1) by direct phosphorylation of CARD11/CARMA1 at 'Ser-559', 'Ser-644' and 'Ser-652'.

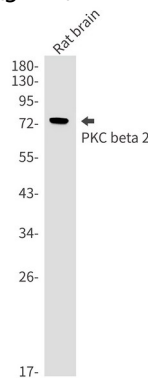
## Research Area

Signal Transduction

## Image Data

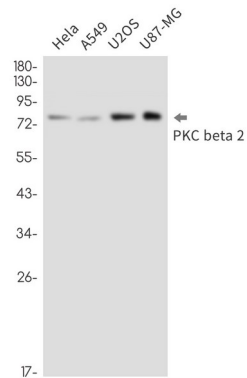


Immunocytochemistry analysis of PKC beta 2 (green) in K562 using PKC beta 2 antibody, and DAPI (blue).

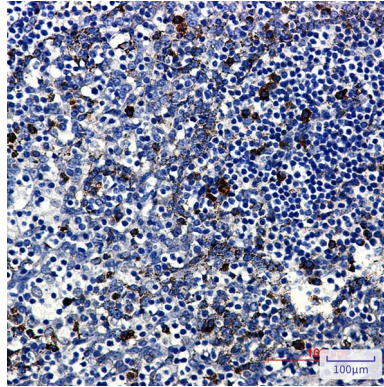


Western blot analysis of PKC beta 2 in rat brain lysates using PKC beta 2 antibody. Observed band size: 77kDa.

**Product Name: PKC beta 2 Rabbit Monoclonal Antibody**  
**Catalog #: AMRe03264**



Western blot analysis of PKC beta 2 in HeLa, A549, U2OS, U87-MG lysates using PKC beta 2 antibody



Immunohistochemistry analysis of paraffin-embedded Human tonsil using PKC beta 2 antibody. High-pressure and temperature Sodium Citrate pH 6.0 was used for antigen retrieval.

## Note

For research use only.