

Summary

Production Name	XRCC1 Rabbit Monoclonal Antibody
Description	Recombinant Rabbit Monoclonal antibody
Host	Rabbit
Application	WB,ICC/IF
Reactivity	Human,Rat

Performance

Conjugation	Unconjugated
Modification	Unmodified
Isotype	IgG
Clonality	Monoclonal Antibody
Form	Liquid
Storage	Store at 4°C short term. Aliquot and store at -20°C long term. Avoid freeze/thaw cycles.
Buffer	50mM Tris-Glycine(pH 7.4), 0.15M NaCl, 40% Glycerol, 0.01% Sodium azide and 0.05% BSA
Purification	Affinity Purified

Immunogen

Gene Name	XRCC1
Alternative Names	XRCC1; DNA repair protein XRCC1; X-ray repair cross-complementing protein 1
Gene ID	7515
SwissProt ID	P18887

Application

Dilution Ratio	WB: 1/500-1/1000 IF: 1/50-1/200
Molecular Weight	Calculated MW: 69 kDa; Observed MW: 82 kDa

Background

Product Name: XRCC1 Rabbit Monoclonal Antibody
Catalog #: AMRe03257

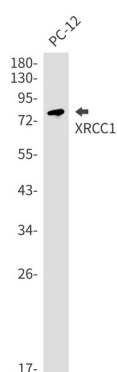


XRCC1 acts as a scaffold protein to coordinate DNA abasic site repair through interaction with several other repair proteins. At least eight XRCC1 protein partners have been identified, including the polynucleotide kinase PNK, DNA ligase III, poly (ADP-ribose) polymerase, and PCNA.

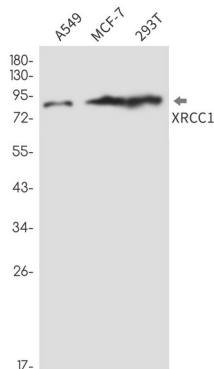
Research Area

Epigenetics and Nuclear Signaling

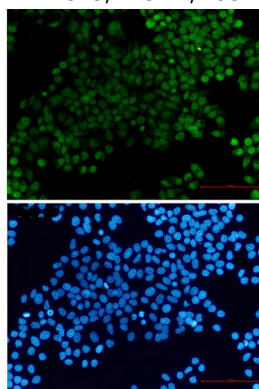
Image Data



Western blot analysis of XRCC1 in PC-12 lysates using XRCC1 antibody.



Western blot analysis of XRCC1 in A549, MCF-7, 293T lysates using XRCC1 antibody.



Immunocytochemistry analysis of XRCC1 (green) in hela using XRCC1 antibody, and DAPI(blue)

Product Name: XRCC1 Rabbit Monoclonal Antibody
Catalog #: AMRe03257



Note

For research use only.