

---

## Summary

<b>Production Name</b>	VPS35 Rabbit Monoclonal Antibody
<b>Description</b>	Recombinant Rabbit Monoclonal antibody
<b>Host</b>	Rabbit
<b>Application</b>	WB,IHC-P
<b>Reactivity</b>	Human,Mouse,Rat

## Performance

<b>Conjugation</b>	Unconjugated
<b>Modification</b>	Unmodified
<b>Isotype</b>	IgG
<b>Clonality</b>	Monoclonal Antibody
<b>Form</b>	Liquid
<b>Storage</b>	Store at 4°C short term. Aliquot and store at -20°C long term. Avoid freeze/thaw cycles.
<b>Buffer</b>	50mM Tris-Glycine(pH 7.4), 0.15M NaCl, 40% Glycerol, 0.01% Sodium azide and 0.05% BSA
<b>Purification</b>	Affinity Purified

## Immunogen

<b>Gene Name</b>	VPS35
<b>Alternative Names</b>	hVPS35; MEM3; PARK17; VPS35
<b>Gene ID</b>	55737
<b>SwissProt ID</b>	Q96QK1

## Application

<b>Dilution Ratio</b>	WB: 1/500-1/1000 IHC: 1/50-1/100
<b>Molecular Weight</b>	Calculated MW: 92 kDa; Observed MW: 81 kDa

## Background

---

**Product Name: VPS35 Rabbit Monoclonal Antibody**  
**Catalog #: AMRe03255**

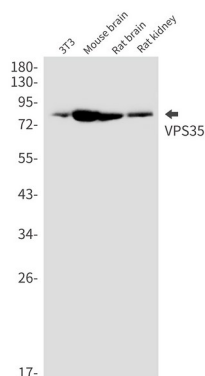


Essential component of the retromer complex, a complex required to retrieve lysosomal enzyme receptors (IGF2R and M6PR) from endosomes to the trans-Golgi network. Also required to regulate transcytosis of the polymeric immunoglobulin receptor (pIgR-pIgA).

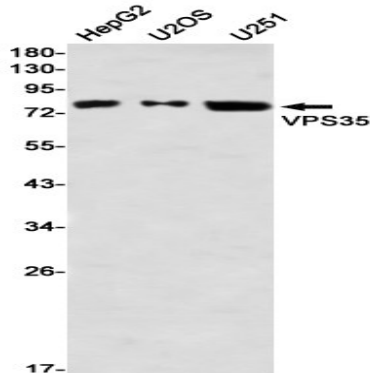
**Research Area**

Signal Transduction

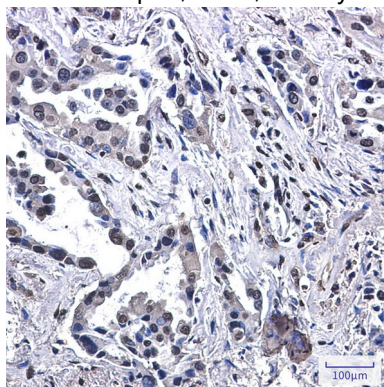
**Image Data**



Western blot analysis of VPS35 in 3T3, mouse brain, rat brain, rat kidney lysates using VPS35 antibody.



Western blot analysis of VPS35 in HepG2, U2OS, U251 lysates using VPS35 antibody.



Immunohistochemistry analysis of paraffin-embedded Human lung cancer using VPS35 antibody. High-pressure and

**Product Name: VPS35 Rabbit Monoclonal Antibody**  
**Catalog #: AMRe03255**



---

temperature Sodium Citrate pH 6.0 was used for antigen retrieval.

**Note**

For research use only.