

**Product Name: Ubiquitin Conjugating Enzyme E2 L3  
Rabbit Monoclonal Antibody  
Catalog #: AMRe03247**



---

## Summary

<b>Production Name</b>	Ubiquitin Conjugating Enzyme E2 L3 Rabbit Monoclonal Antibody
<b>Description</b>	Recombinant Rabbit Monoclonal antibody
<b>Host</b>	Rabbit
<b>Application</b>	WB,ICC/IF,IP
<b>Reactivity</b>	Human,Mouse,Rat

## Performance

<b>Conjugation</b>	Unconjugated
<b>Modification</b>	Unmodified
<b>Isotype</b>	IgG
<b>Clonality</b>	Monoclonal Antibody
<b>Form</b>	Liquid
<b>Storage</b>	Store at 4°C short term. Aliquot and store at -20°C long term. Avoid freeze/thaw cycles.
<b>Buffer</b>	50mM Tris-Glycine(pH 7.4), 0.15M NaCl, 40% Glycerol, 0.01% Sodium azide and 0.05% BSA
<b>Purification</b>	Affinity Purified

## Immunogen

<b>Gene Name</b>	UBE2L3
<b>Alternative Names</b>	E2-F1; L-UBC; UBCH7; UbcM4
<b>Gene ID</b>	7332
<b>SwissProt ID</b>	P68036

## Application

<b>Dilution Ratio</b>	WB: 1/500-1/1000 IF: 1/50-1/200 IP: 1/20
<b>Molecular Weight</b>	Calculated MW: 18 kDa; Observed MW: 18 kDa

**Product Name: Ubiquitin Conjugating Enzyme E2 L3  
Rabbit Monoclonal Antibody  
Catalog #: AMRe03247**



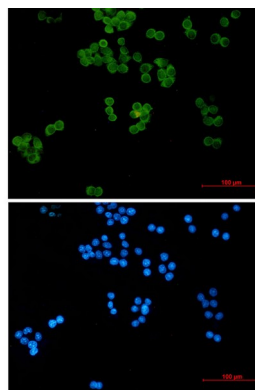
## Background

Ubiquitin-conjugating enzyme E2 that specifically acts with HECT-type and RBR family E3 ubiquitin-protein ligases.

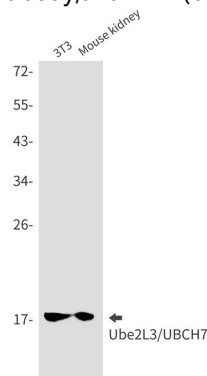
## Research Area

-

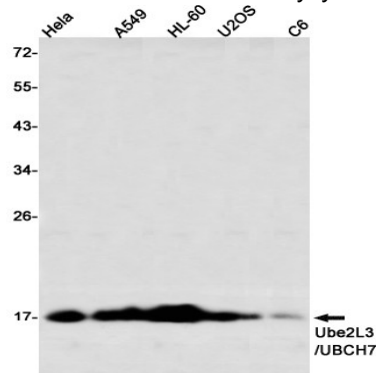
## Image Data



Immunocytochemistry analysis of Ubiquitin Conjugating Enzyme E2 L3 (green) in HeLa using Ubiquitin Conjugating Enzyme E2 L3 antibody, and DAPI (blue).



Western blot analysis of Ube2L3/UBCH7 in 3T3, mouse kidney lysates using Ube2L3/UBCH7 antibody.



**Product Name: Ubiquitin Conjugating Enzyme E2 L3  
Rabbit Monoclonal Antibody  
Catalog #: AMRe03247**



---

Western blot analysis of Ube2L3/UBCH7 in HeLa, A549, HL-60, U2OS, C6 lysates using Ube2L3/UBCH7 antibody

**Note**

For research use only.